

ARTHRITIS COMMUNITY RESEARCH & EVALUATION UNIT (ACREU)

*The Arthritis and Immune Disorder Research Centre
Health Care Research Division
University Health Network*

February, 2000

Provincial Projections of Arthritis or Rheumatism, 1996-2016

**Special Report to the Canadian Rheumatology
Association**

Prepared by:

*Elizabeth M. Badley
Naomi Kasman*

Working Paper 00-2, February 2000

UHN/PMH
610 University Avenue
16th Floor, Room 16-706
Toronto, Ontario
M5G 2M9



University Health Network

Toronto General Hospital Toronto Western Hospital Princess Margaret Hospital



*In partnership with
The Arthritis Society, Ontario Division
& in affiliation with
The University of Toronto*



*University of
Toronto*

**Special Report to the
Canadian Rheumatology Association**

February 2000

**Provincial Projections
of Arthritis or Rheumatism,
1996-2016**

Prepared by:

**Elizabeth M Badley
Naomi Kasman**



**The Arthritis Community Research and Evaluation Unit
The Arthritis and Immune Disorder Research Centre
University Health Network**

May 2000

EXECUTIVE SUMMARY

- Arthritis and rheumatism is one of the most prevalent chronic conditions and the foremost cause of physical disability in the Canadian population. The number of people with arthritis or rheumatism is projected to increase with the aging of the population.
- This report presents provincial estimates of the number of people with arthritis or rheumatism from 1996 to 2016. Age and gender specific prevalence estimates for arthritis or rheumatism as a long term health problem diagnosed by a health professional from the 1996 National Population Health Survey were used as a baseline in conjunction with Statistics Canada's national and provincial population projections.
- Between 1996 and 2016 the number of Canadians aged 15 and older will grow from 23.9 million to 30.9 million, with an increase in modal age group from 35-39 to 50-54 years. Similar increases in modal ages are predicted for all provinces, although there are large variations in the projected net population growth.
- In the 1996 National Population Health Survey 3.2 million (13.4%) Canadians aged 15 years and older reported arthritis or rheumatism as a long-term health condition that had been diagnosed by a health professional. The prevalence increased with age from 1.6% in the 15-24 year old age group to 44.8% percent in the 75 and older age group.
- With the aging of the population, the number of people in Canada with arthritis or rheumatism is projected to increase from 3.2 million people to 5 million people between 1996 and 2016. Estimated provincial increases are:

Province	Number of People ('000s)		Province	Number of People ('000s)	
	1996	2016		1996	2016
Newfoundland	61.8	86.6	Ontario	1288.2	2090.4
Prince Edward Island	18.1	24.7	Manitoba	141.9	186.9
Nova Scotia	145.3	199.2	Saskatchewan	138.1	169.8
New Brunswick	96.9	136.2	Alberta	286.6	479.7
Quebec	614.1	923.7	British Columbia	403.7	672.3

- In all provinces the number of people aged 15-44 with arthritis or rheumatism is projected to remain about the same or decrease slightly. There will be an increase across all provinces of arthritis or rheumatism in people aged 45 and older, which is split between the 45-64 and 65 and older age groups.
- This report presents hypothetical long-term trends for the prevalence and number of people affected by arthritis or rheumatism in Canada and by province from 1996 to 2016. It highlights the need for increased awareness of arthritis and its adverse consequences, and the need for adequate specialists and other treatment facilities to be available throughout Canada.

TABLE OF CONTENTS

EXECUTIVE SUMMARY	i
LIST OF TABLES	ii
LIST OF FIGURES	iii
LIST OF APPENDICES	iv
INTRODUCTION	1
DATA SOURCES	1
RESULTS	1
DISCUSSION	3
REFERENCES	5

LIST OF TABLES

- Table 1: Estimated Population of Canada and the Canadian Provinces (1000's) and Modal Age Groups (year), 1996-2016
- Table 2: Estimated Prevalence and Number of People with Arthritis or Rheumatism in Canada by Age Group in 1996

LIST OF FIGURES

- Figure 1: Population of Canada by Age Group in 1996 and Estimates for 2016
- Figure 2: Actual and Standardized Provincial Estimates of Prevalence of Arthritis or Rheumatism in 1996
- Figure 3: Estimated Number of People with Arthritis or Rheumatism and its Prevalence in Canada in 1996 and 2016
- Figure 4: Estimated Provincial Prevalence of Arthritis or Rheumatism in 1996 and 2016 (with 95% confidence limits)
- Figure 5: Estimated Number of People with Arthritis or Rheumatism in 1996 and 2016
- Figure 6: Prevalence of Arthritis or Rheumatism in 1996 and Estimated for 2016 by Province and Gender
- Figure 7: Estimated Number of People with Arthritis or Rheumatism in the Canadian Provinces by Age Group

LIST OF APPENDICES

Appendix 1:	Canada
Appendix 2:	Newfoundland
Appendix 3:	Prince Edward Island
Appendix 4:	Nova Scotia
Appendix 5:	New Brunswick
Appendix 6:	Quebec
Appendix 7:	Ontario
Appendix 8:	Manitoba
Appendix 9:	Saskatchewan
Appendix 10:	Alberta
Appendix 11:	British Columbia

INTRODUCTION

Arthritis is one of the most prevalent chronic conditions in developed countries, affecting almost 20% of adults in Canada, which includes over 1 million people in Ontario alone.^{1,3} Arthritis is also the leading cause of long-term disability in Canada.¹ Despite the common belief to the contrary, arthritis is not only a disease of the elderly, but there is marked increase in prevalence with age.² Recent research shows that the prevalence and number of people affected by arthritis are going to increase substantially in the near future due to the aging of the population.³ It is estimated that the number of people with arthritis in Canada will increase by approximately one million cases per decade.³ These projections demonstrate the urgency for the development of public policy to deal with the economic implications for both the individual and society of the large predicted increase in the number of people with arthritis or rheumatism.

DATA SOURCES

Data on arthritis prevalence were obtained from the 1996 National Population Health Survey (NPHS), which is designed to collect information related to the health of the Canadian population. The target population of the NPHS included all household residents in all provinces, with the principal exclusion of populations on Indian Reserves, Canadian Forces Bases, and some remote areas in Quebec and Ontario. 'Arthritis or rheumatism' was included in a list of health conditions that was presented in conjunction with the question "Do you have any of the following long-term conditions that have been diagnosed by a health professional." In total, 17 189 households were surveyed across Canada with a response rate of 94.3%. For the prevalence calculations, the weighted prevalence of arthritis for each group was used.

Data on the projected population of Canada by age group and sex for each province at five-year intervals beginning July 1, 1996 and ending July 1, 2016 were obtained from Statistics Canada projections. Provincial projections are available only up to 2016. Provincial results are mainly presented with provinces ordered from east to west.

RESULTS

The population of Canada is aging and growing. Between 1996 and 2016 the number of Canadians aged 15 and older will grow from 23.9 million to 30.9 million (Table 1). Table 1 also shows that in 1996 the modal age group of the population was 35-39 years, but by 2016 the modal

age group will be 50-54 years. Similar increases in modal ages are predicted for all provinces. However, there are large variations in the projected net population growth between provinces. The population of Newfoundland is projected to decline by 1.5% whereas the population of British Columbia is expected to grow by over 41%. Figure 1 displays the age distribution of the population of Canada, and illustrates the increase in the population of the older age groups that is expected to occur by the year 2016. The huge increase in the number of people aged 50+ is evident in this figure.

In the 1996 National Population Health Survey 13.4% of Canadians aged 15 years and older reported arthritis or rheumatism as a long-term health condition that had been diagnosed by a health professional. This represents 3.2 million Canadians. The prevalence of reported arthritis or rheumatism ranges from 1.6% in the 15-24 year old age group to 44.8% percent in the 75 and older age group (Table 2). The 1996 prevalence of arthritis or rheumatism is also highly variable by province, ranging from 10% in Quebec to 19% in Nova Scotia. Figure 2 shows the actual and age standardized prevalence of arthritis or rheumatism by province for 1996. The age standardized prevalence rates are generally similar to the actual rates suggesting that provincial differences in prevalence are not due to differences in the age structure of the provincial populations. It is not known to what degree this provincial variation in the percent prevalence of arthritis or rheumatism can be accounted for by survey related issues, differences in socioeconomic status, access to health care, or other, as yet unidentified, factors.

The percent prevalence of arthritis or rheumatism does not necessarily reflect the potential need for services, which is, rather, a function of the number of people affected. Figure 3 shows the provincial variation in the prevalence of arthritis or rheumatism ordered from high to low by the 1996 rates. Even though the percent prevalence tends to be highest in the Maritime and Prairie provinces, the largest numbers of people living with arthritis or rheumatism live in Ontario and Quebec, a reflection of the size of the provincial populations.

With the aging of the population, the overall prevalence of arthritis or rheumatism in Canada is projected to increase from 13.2% in 1996 to 16.1% in 2016. The number of people will increase by 1.8 million people (i.e. from 3.2 million people to 5 million people). The provincial changes in prevalence from 1996 to 2016 are illustrated in Figure 4. There are increases in prevalence across all the provinces. Figure 5 shows the increase in the number of people with arthritis or rheumatism by province for each 5-year period between 1996 and 2016. These figures are plotted on a logarithmic scale to accommodate the large differences between provinces in the estimated number of people with arthritis or rheumatism and to show the relative slope of the increase across the provinces. Increases are generally similar across provinces.

Figure 6 shows the prevalence of arthritis or rheumatism in 1996 and 2016 by gender in each province. The increase in prevalence is similar for men and women across all provinces.

Figures 7a-7j illustrate the estimated number of people with arthritis or rheumatism by province and major age groups (i.e. 15-44, 45-64, 65+) for each 5-year period between 1996 and 2016. In all provinces the number of people aged 15-44 with arthritis or rheumatism is projected to remain about the same or decreases slightly. There will be an increase across all provinces of arthritis or rheumatism in people aged 45 and older, which will be split between the 45-64 and 65 and older age groups. This reflects earlier findings for Canada as a whole.

The appendix provides detailed information on both provincial and Canadian population projections by age, age specific prevalence rates of arthritis or rheumatism, and the projected number of people with arthritis or rheumatism by age group and overall.

DISCUSSION

This report provides hypothetical long-term trends for the prevalence and number of people affected by arthritis or rheumatism in Canada and by province from 1996 to 2016. Using data from a major Canadian survey, we determined that the prevalence of arthritis or rheumatism will increase by about 20% between 1996 and 2016, while the number of people with arthritis or rheumatism will increase by over 50%. The proportionate increase in numbers is greater because the number of people with arthritis is influenced by the overall population growth of Canada and the provinces, as well as changes in age structure over time. The increase in prevalence is related only to changes in the age structure of the population.

The projections suggest that the growth in the number of people with arthritis or rheumatism is predominantly in the population aged 45 years and older. This pattern of growth can be attributed to the aging of the baby boom generation. In the 20 years starting in 1946, there was a large increase in the birth rate in Canada, reaching an average of 3.9 births for each woman of childbearing age in 1959.¹ These people are now beginning to move into the age groups where the prevalence of arthritis begins to climb.

Our projections are subject to several limitations. First, the data refer to self-reported arthritis or rheumatism that has been diagnosed by a physician. There is no confirmation that these individuals did, in fact, have arthritis or rheumatism. As well, the type of arthritis is not known. Second, the projections refer only to the household population and we made the

assumption that the prevalence of arthritis in the institutional population would be the same as in the household population. Our previous work shows that this is likely to be a reasonable assumption.³ Third, our arthritis projections depend on the accuracy of the baseline Canadian population projections.

Prevalence is a measure that reflects both the incidence of new cases and the pool of people with existing arthritis. In these projections, we have assumed that the age-sex prevalence of arthritis will remain constant over time. However, the prevalence of arthritis in the future may be influenced by variations in incidence or new methods of treatment. The incidence of arthritis may be affected by changes in the population at risk. Advances in knowledge leading to prevention and treatment for other conditions could also have a substantial effect on the nature of the population at risk for arthritis.

This report highlights the need for increased awareness of arthritis and its adverse consequences. These projections also point to the urgency of public policies to address the control of arthritis and arthritis disability, and the need for adequate specialists and other treatment facilities to be available throughout Canada.

REFERENCES

1. Badley EM, Rasooly I, Webster GK. Relative importance of musculoskeletal disorders as a cause of chronic health problems, disability and health care utilization: findings from the 1990 Ontario Health Survey. *J Rheumatol* 1994; 21(3): 505-14.
2. Badley EM. The impact of disabling arthritis. *Arthritis Care Res* 1995; 8:221-8.
3. Badley EM, Wang PP. Arthritis and the aging population: projections of arthritis prevalence in Canada 1991 to 2031. *J Rheumatol* 1998; 25(1): 138-44.
4. Statistics Canada. National population health survey 1996-1997: public use micro data files. Ottawa: Statistics Canada, 1997.
5. Chui T. Canada's population: Charting into the 21st century. *Canadian social trends* (summer) 1991; 42-3-

**Table 1: Estimated Population of Canada and the Canadian Provinces (1000's)
and Modal Age Groups (year), 1996-2016**

	1996		2016		% Growth
	Population	Modal Age	Population	Modal Age	
Canada	23900.1	35-39	30889.1	50-54	29.24
NFLD	464.2	35-39	457.1	50-59	-1.53
PEI	105.3	35-39	120.5	50-54	14.43
NS	753.8	35-39	830.6	55-59	10.19
NB	612.3	35-39	657.0	50-54	7.30
Quebec	6003.3	35-39	7149.5	50-54	19.09
Ontario	9018.8	30-34	12535.9	50-54	39.00
Manitoba	886.8	35-39	1012.4	75+	14.16
SASK	774.8	35-39	833.6	75+	7.59
Alberta	2157.8	35-39	2875.8	55-59	33.27
BC	3051.3	35-39	4313.8	50-54	41.38

Figure 1: Population of Canada by Age Group in 1996 and Estimates for 2016

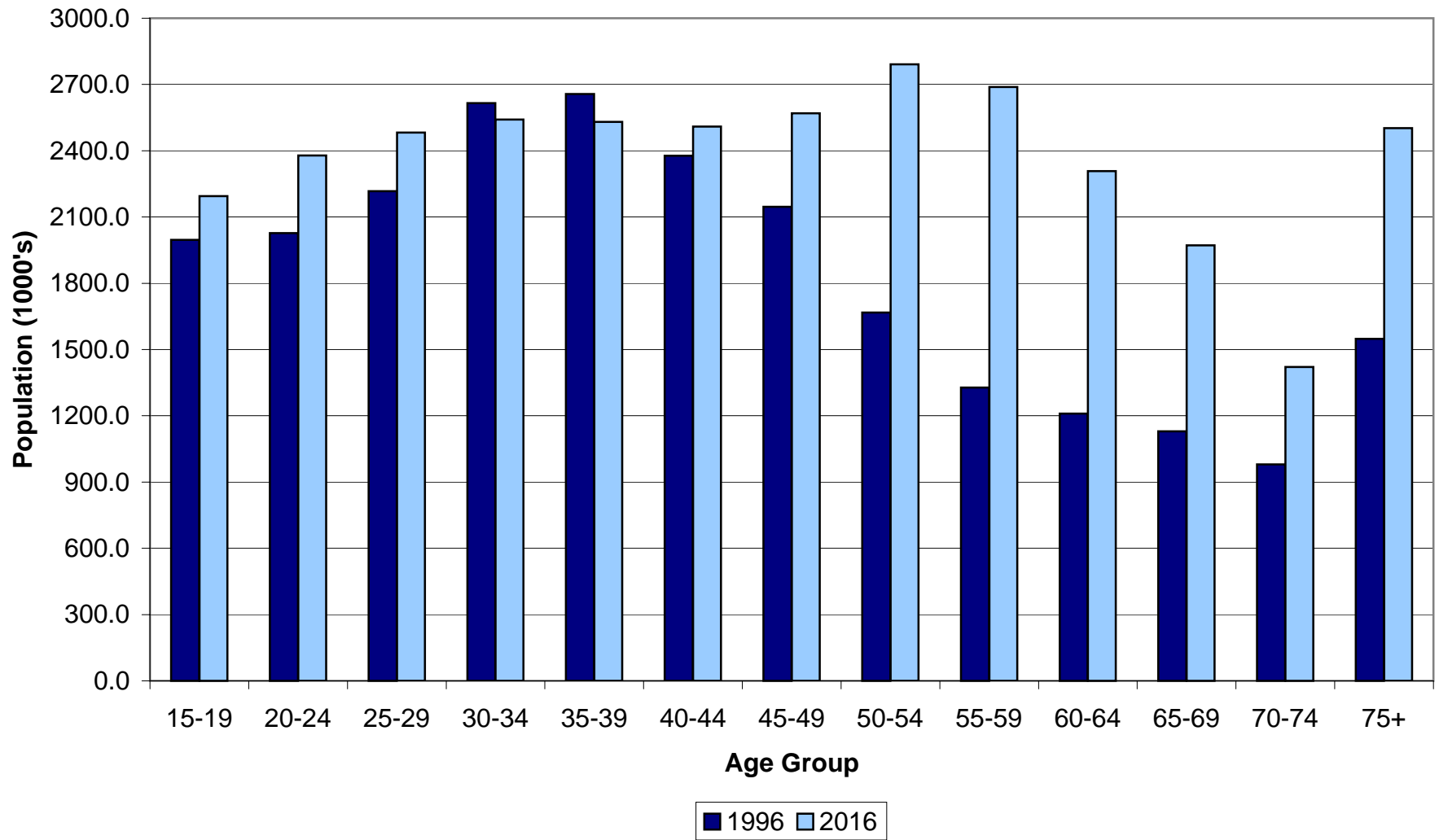


Table 2: Estimated Prevalence and Number of People with Arthritis or Rheumatism in Canada by Age Group in 1996

	Number of People	Prevalence (%)
15-24	63946	1.59
25-34	160560	3.32
35-44	335592	6.67
45-54	523264	13.72
55-64	660895	26.05
65-74	765449	36.28
75+	693105	44.78
Total	3202800	13.23

Figure 2: Actual and Standardized Provincial Estimates of Prevalence of Arthritis or Rheumatism in 1996

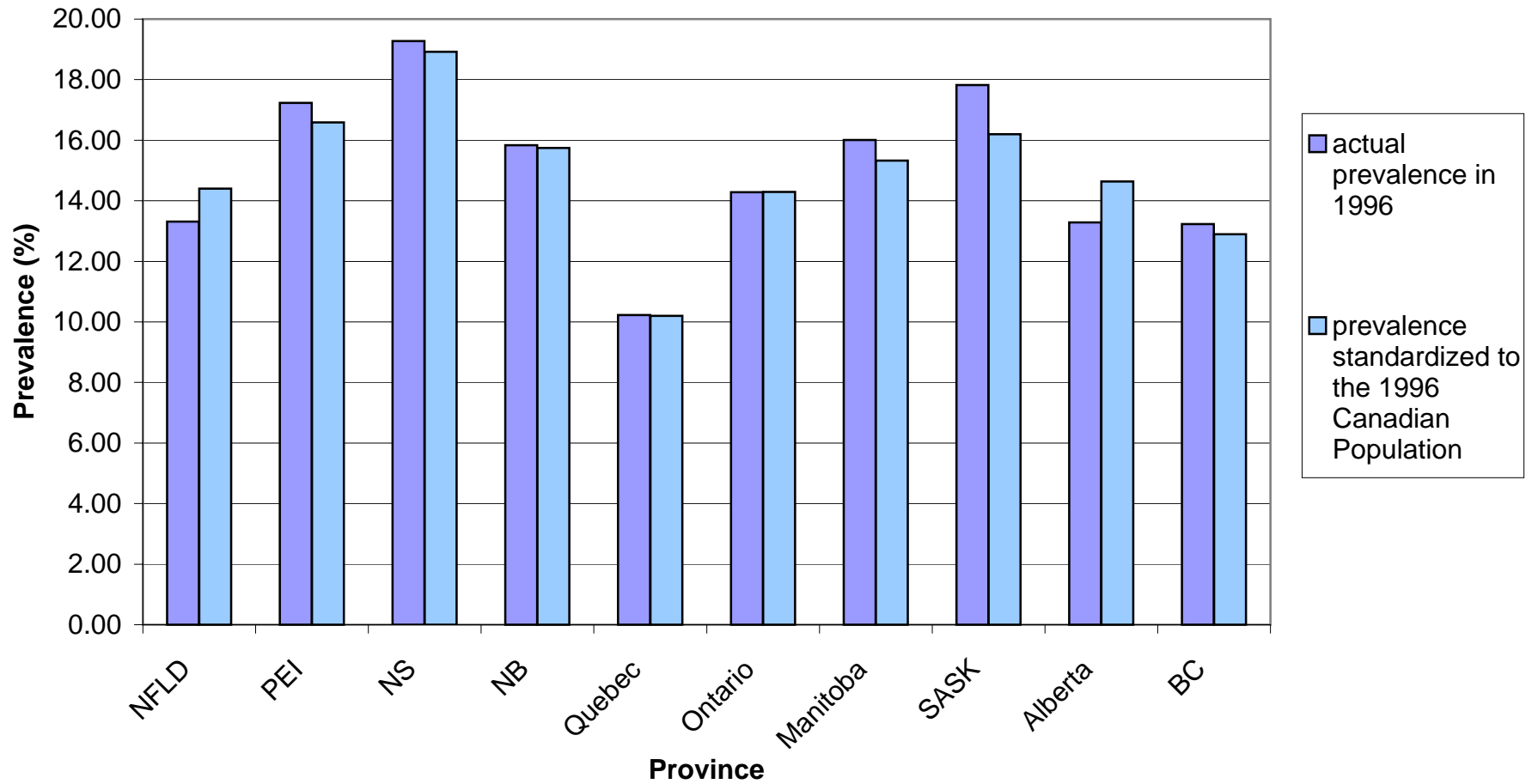


Figure 3: Estimated Number of People with Arthritis or Rheumatism and its Prevalence in Canada in 1996 and 2016

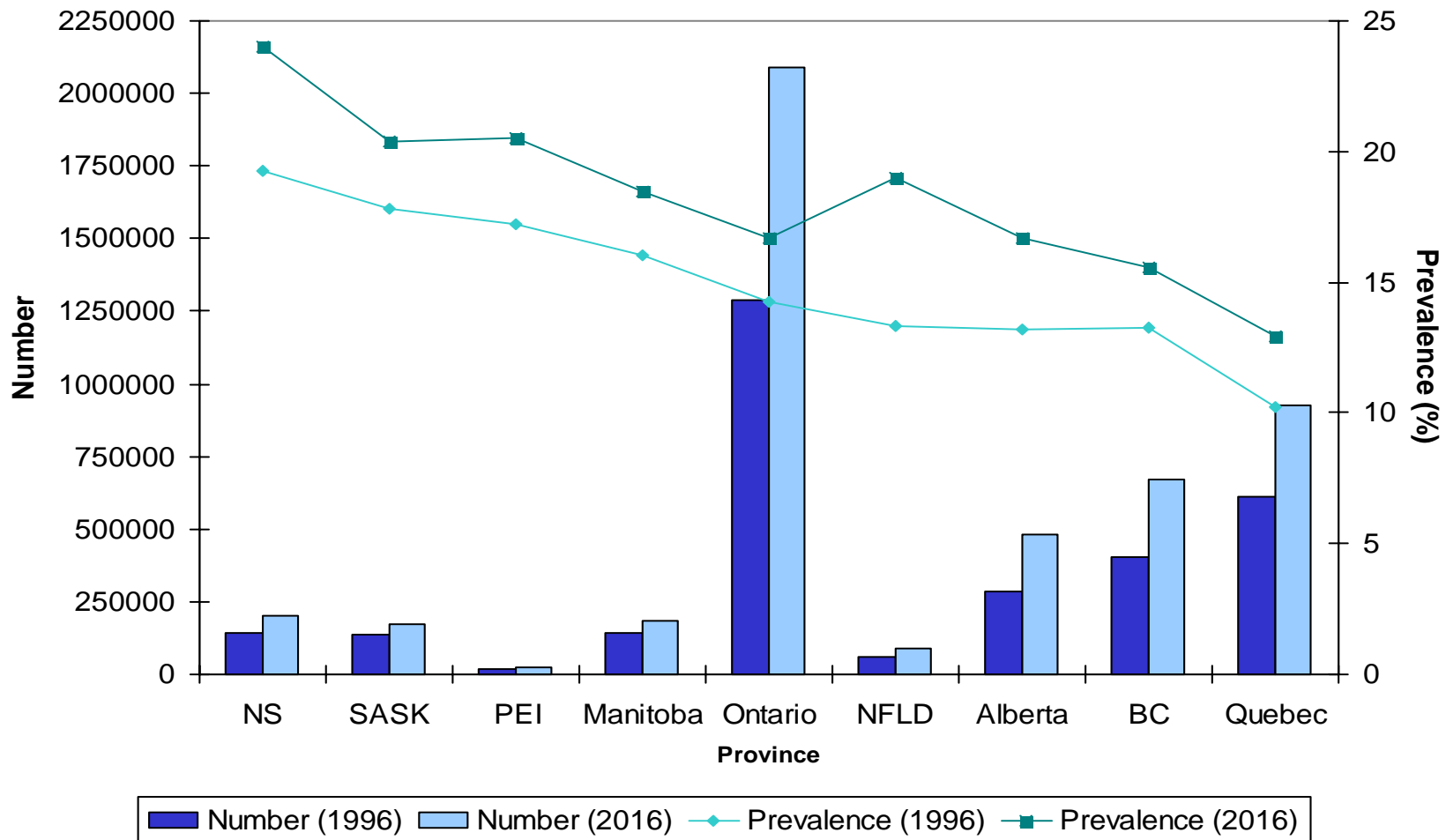


Figure 4: Estimated Provincial Prevalence of Arthritis or Rheumatism in 1996 and 2016 (with 95% confidence limits)

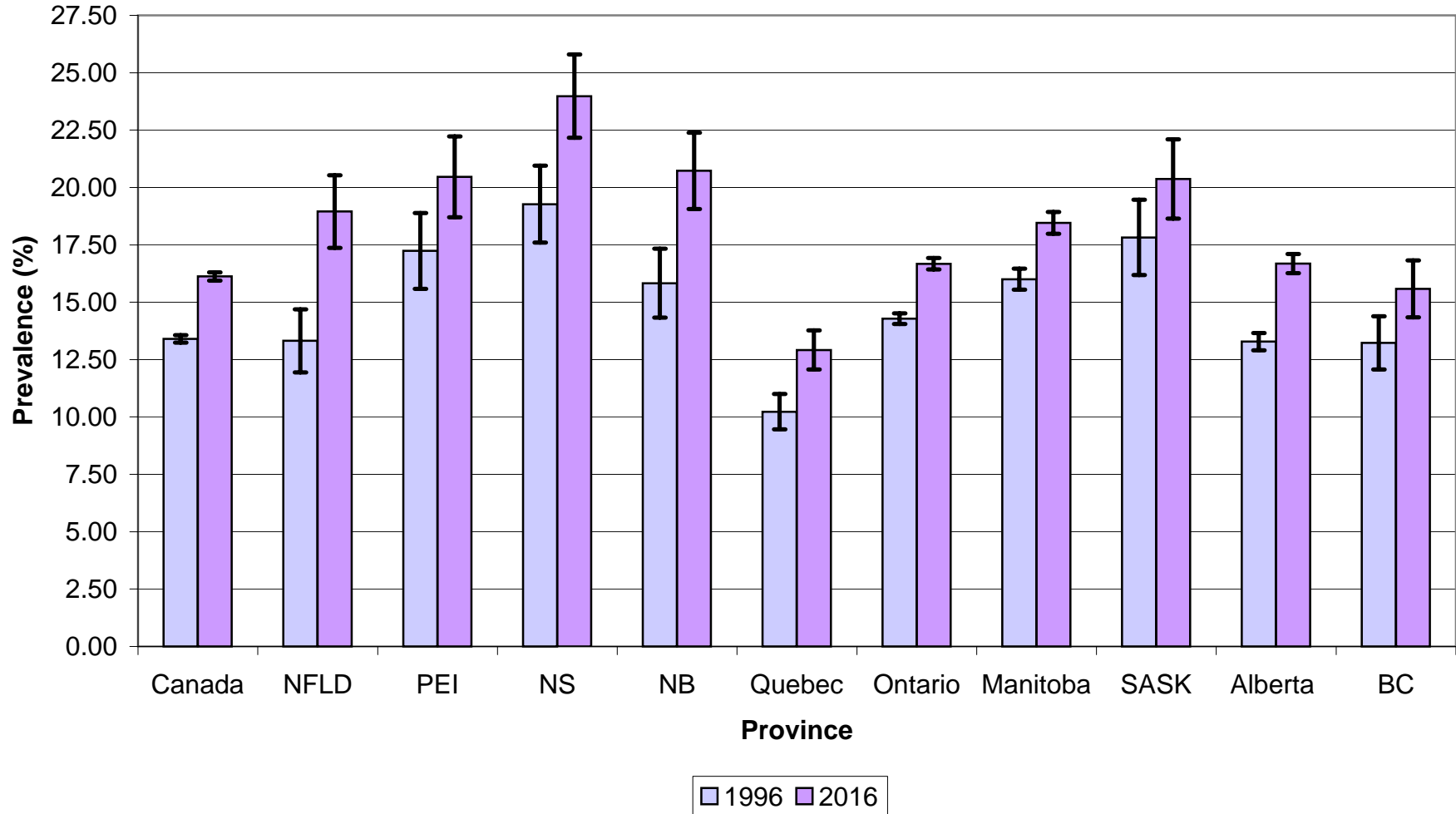


Figure 5: Estimated Number of People with Arthritis or Rheumatism in 1996 and 2016

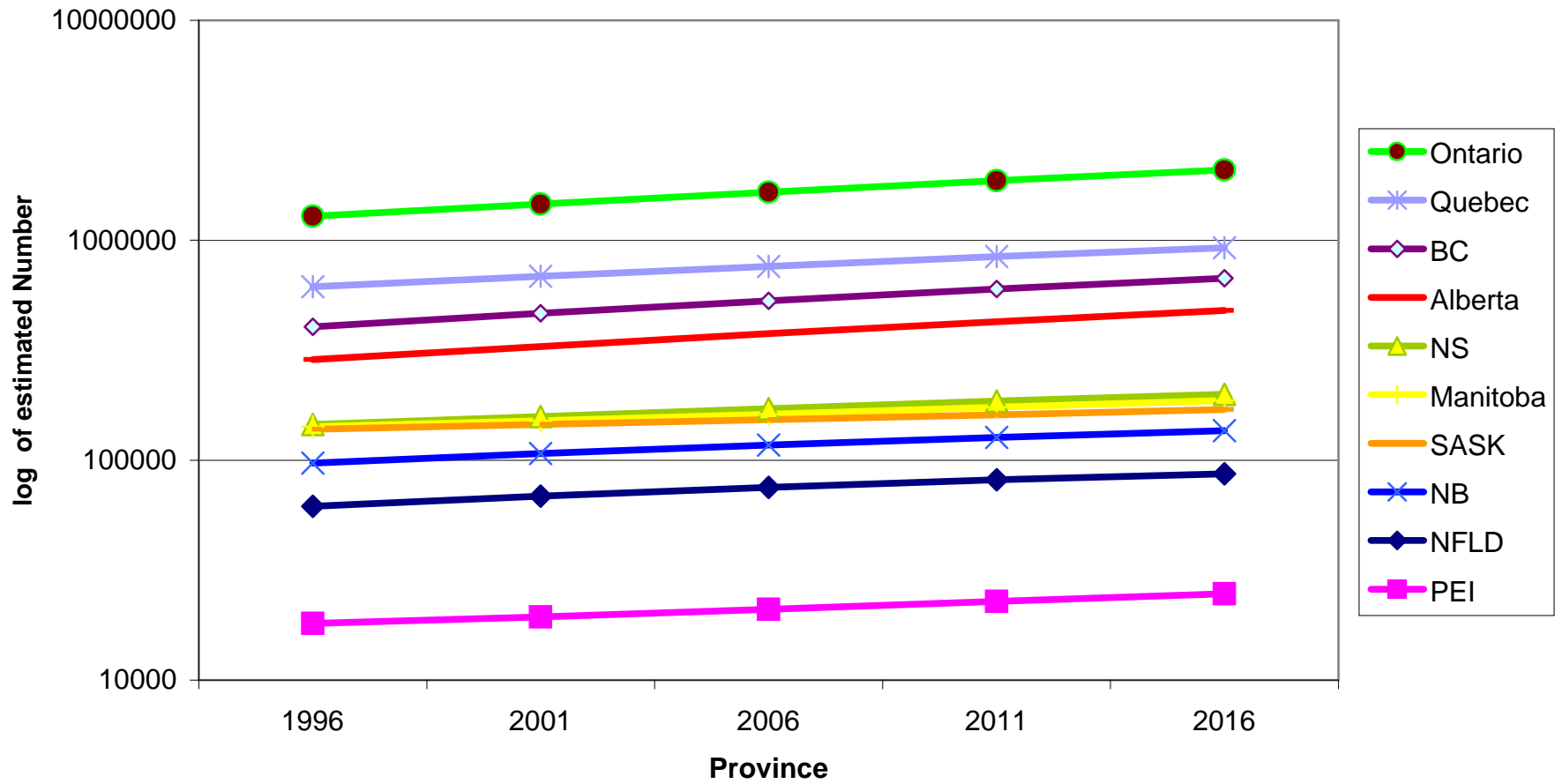


Figure 6: Prevalence of Arthritis or Rheumatism in 1996 and Estimated for 2016 by Province and Gender

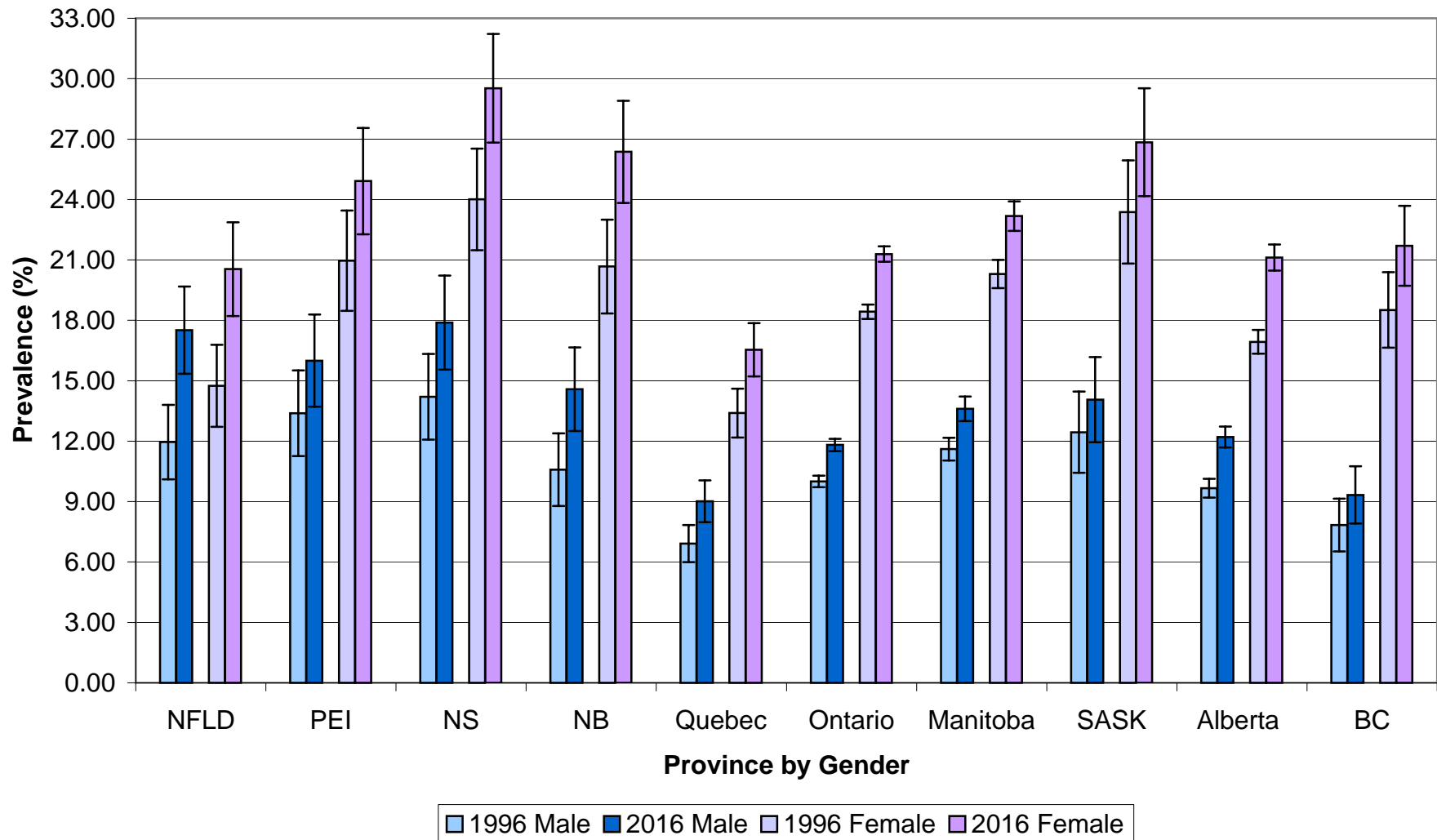
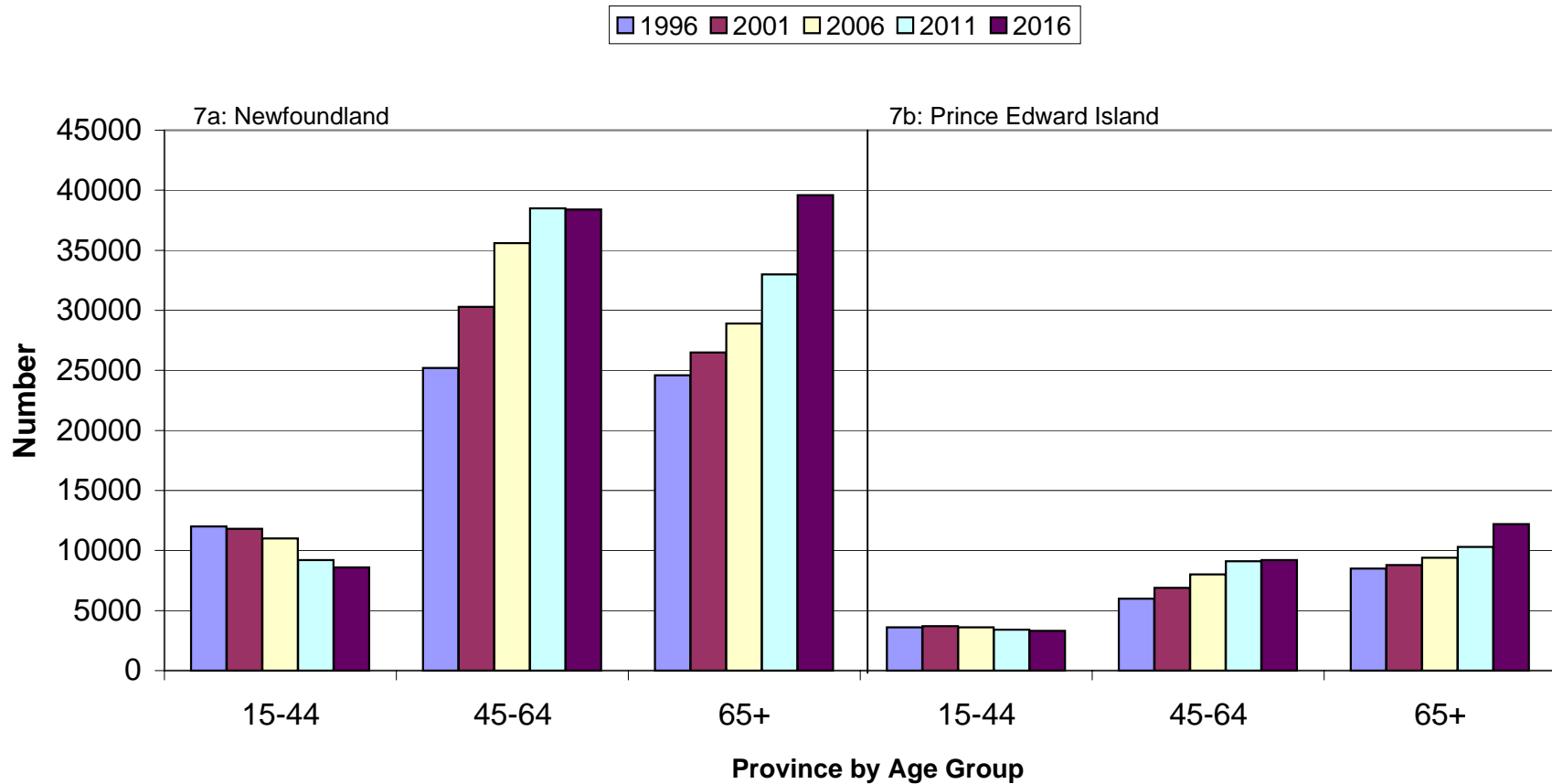
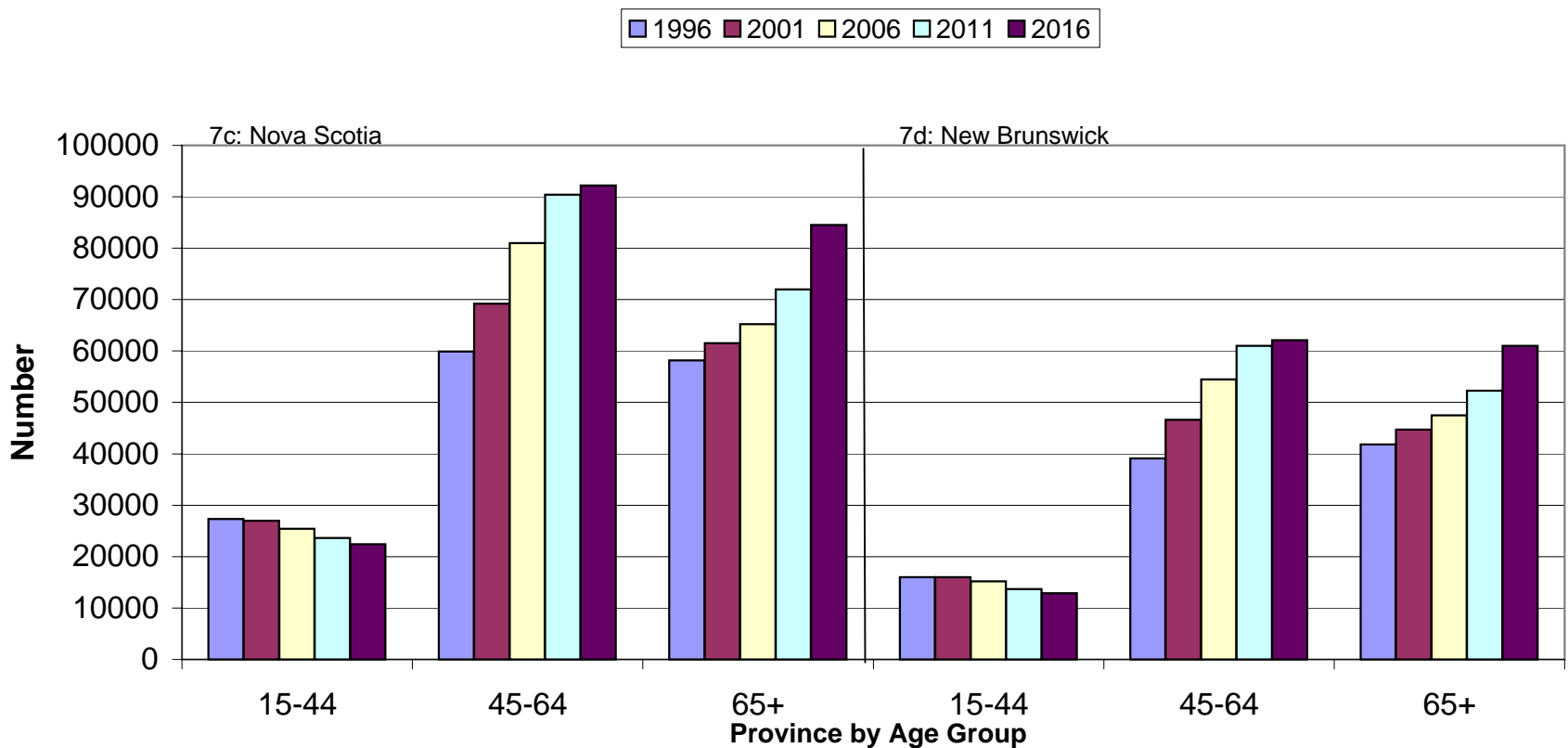


Figure 7: Estimated Number of People with Arthritis or Rheumatism in the Canadian Provinces by Age Group*



* Note: scale of y axis varies to accommodate differences in population size between provinces

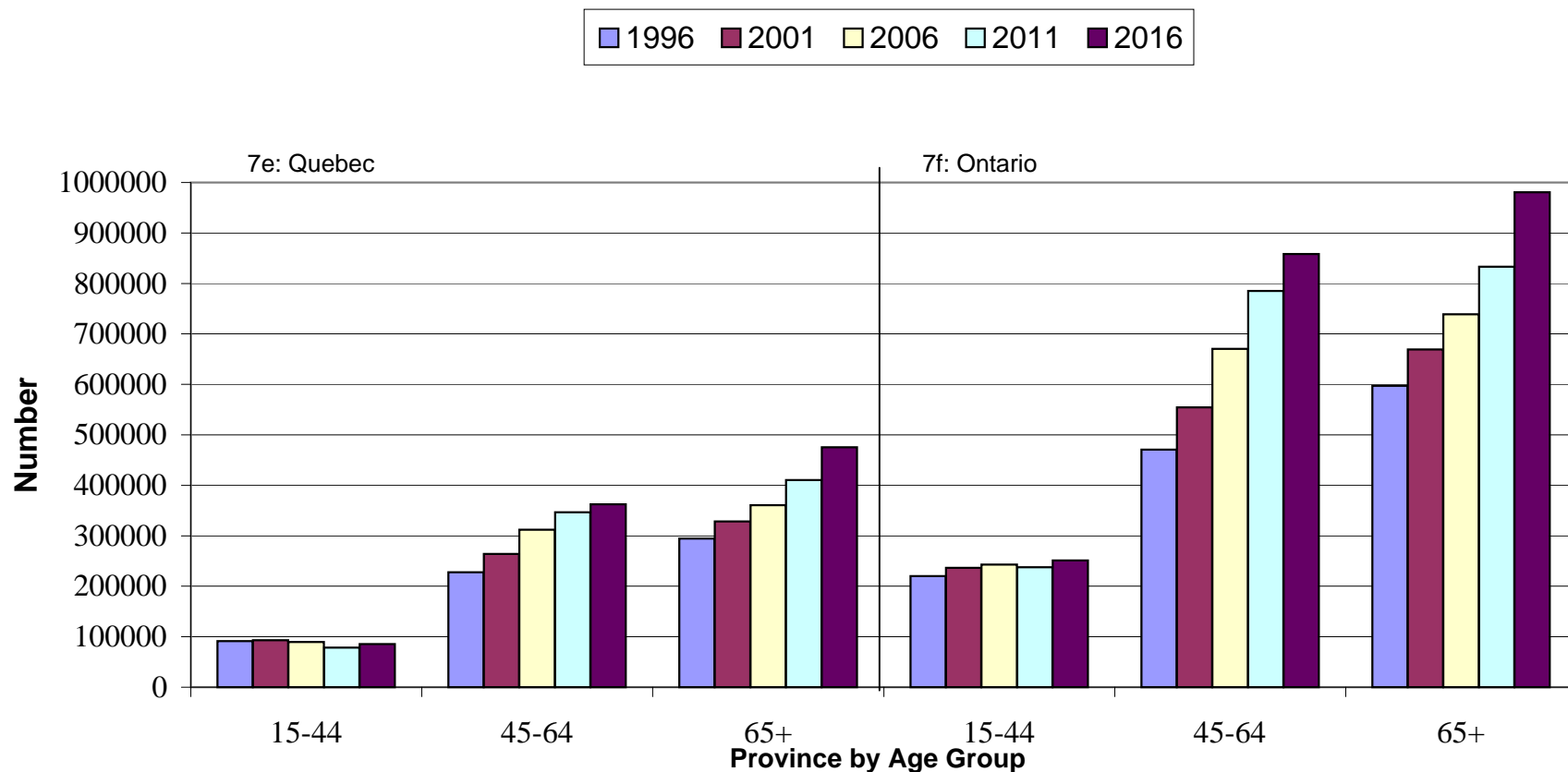
Figure 7, cont: Estimated Number of People with Arthritis or Rheumatism in the Canadian Provinces by Age Group*



* Note: scale of y axis varies to accommodate differences in population size between provinces



Figure 7, cont: Estimated Number of People with Arthritis or Rheumatism in the Canadian Provinces by Age Group*

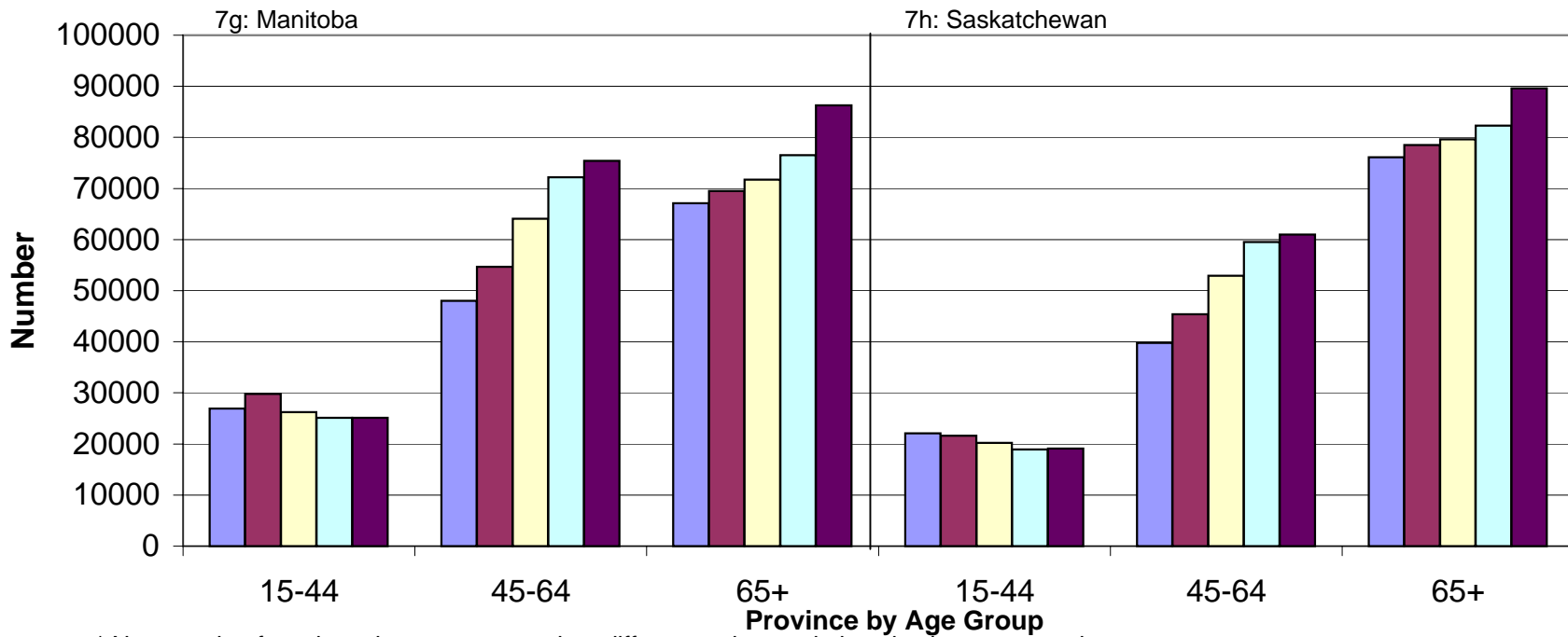


* Note: scale of y axis varies to accommodate differences in population size between provinces



Figure 7, cont: Estimated Number of People with Arthritis or Rheumatism in the Canadian Provinces by Age Group*

1996 2001 2006 2011 2016

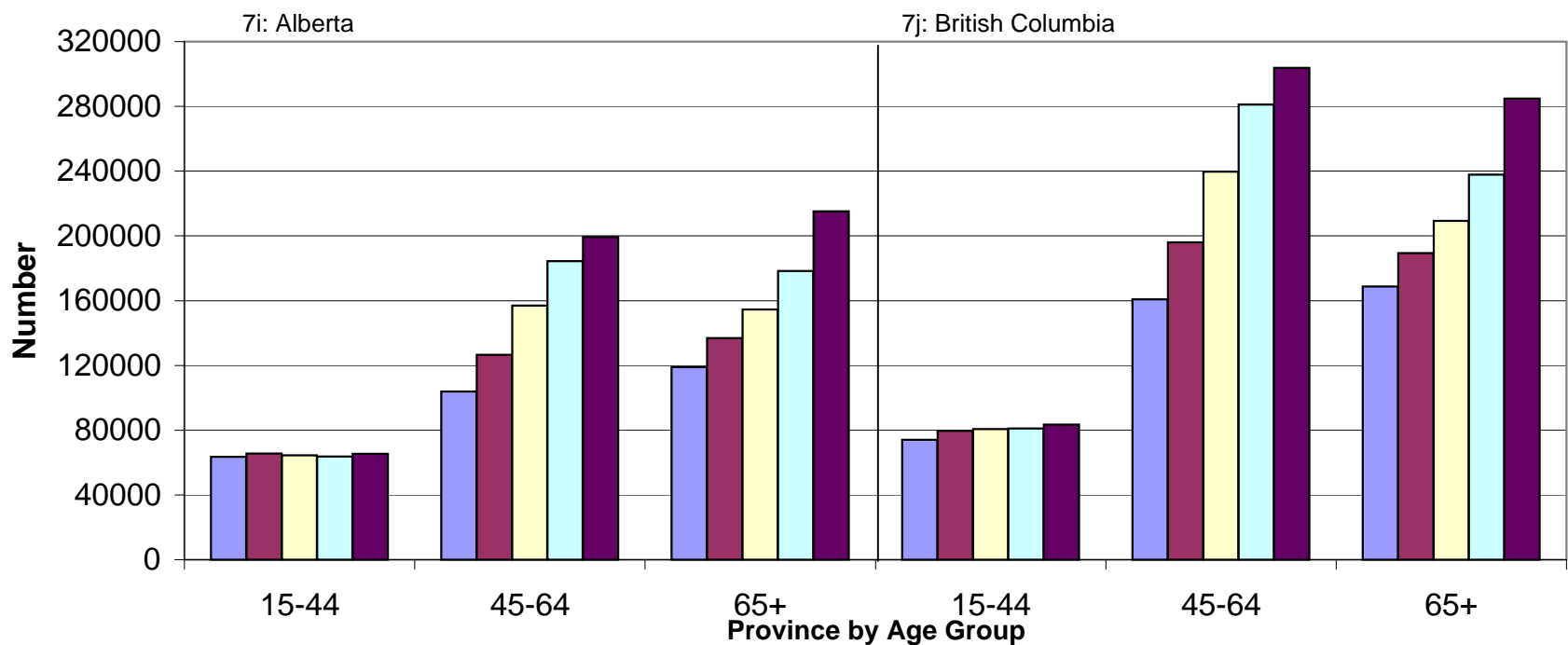


* Note: scale of y axis varies to accommodate differences in population size between provinces



Figure 7, cont: Estimated Number of People with Arthritis or Rheumatism in the Canadian Provinces by Age Group*

1996 2001 2006 2011 2016



* Note: scale of y axis varies to accommodate differences in population size between provinces



APPENDIX

CANADA

Age Groups	Population Projections ('000s)					Age Groups	Weighted Age Specific Rates of Arthritis or Rheumatism (%)	Age Groups	Number of Arthritis or Rheumatism Cases ('000's)				
	1996	2001	2006	2011	2016				1996	2001	2006	2011	2016
15-19	1996.3	2124.5	2213.7	2259.2	2194.8	15-19	1.01	15-19	20.2	21.5	22.4	22.8	22.2
Male	1023.8	1088.0	1135.8	1161.6	1129.5	Male	0.74	Male	7.6	8.1	8.4	8.6	8.4
Female	972.5	1036.4	1078.0	1097.6	1065.4	Female	1.29	Female	12.5	13.4	13.9	14.2	13.7
20-24	2027.0	2115.2	2242.9	2332.3	2378.2	20-24	2.16	20-24	43.8	45.7	48.4	50.4	51.4
Male	1031.8	1080.1	1144.3	1192.2	1218.3	Male	0.98	Male	10.1	10.6	11.2	11.7	11.9
Female	995.2	1035.0	1098.6	1140.1	1159.9	Female	3.38	Female	33.6	35.0	37.1	38.5	39.2
25-29	2217.5	2177.7	2265.9	2392.8	2482.2	25-29	2.57	25-29	57.0	56.0	58.2	61.5	63.8
Male	1119.4	1103.0	1151.5	1215.3	1263.3	Male	1.77	Male	19.8	19.5	20.4	21.5	22.4
Female	1098.1	1074.7	1114.5	1177.5	1218.9	Female	3.38	Female	37.1	36.3	37.7	39.8	41.2
30-34	2615.4	2366.4	2328.3	2416.1	2541.4	30-34	3.96	30-34	103.6	93.7	92.2	95.7	100.6
Male	1324.2	1192.9	1177.5	1225.8	1288.9	Male	2.66	Male	35.2	31.7	31.3	32.6	34.3
Female	1291.2	1173.4	1150.8	1190.3	1252.5	Female	5.29	Female	68.3	62.1	60.9	63.0	66.3
35-39	2657.3	2723.4	2479.5	2443.0	2530.4	35-39	5.39	35-39	143.2	146.8	133.6	131.7	136.4
Male	1337.4	1376.1	1248.0	1233.4	1281.5	Male	3.80	Male	50.8	52.3	47.4	46.9	48.7
Female	1319.9	1347.3	1231.5	1209.6	1248.9	Female	6.97	Female	92.0	93.9	85.8	84.3	87.0
40-44	2377.8	2716.3	2782.9	2544.5	2509.9	40-44	8.09	40-44	192.4	219.7	225.1	205.9	203.1
Male	1185.3	1363.9	1403.0	1278.2	1264.8	Male	5.70	Male	67.6	77.7	80.0	72.9	72.1
Female	1192.5	1352.3	1379.8	1266.2	1245.1	Female	10.40	Female	124.0	140.6	143.5	131.7	129.5
45-49	2146.6	2399.6	2734.2	2801.9	2569.5	45-49	11.42	45-49	245.1	274.0	312.2	320.0	293.4
Male	1077.5	1193.9	1370.2	1410.1	1289.1	Male	8.66	Male	93.3	103.4	118.7	122.1	111.6
Female	1069.1	1205.7	1363.9	1391.8	1280.4	Female	14.30	Female	152.9	172.4	195.0	199.0	183.1
50-54	1667.4	2140.1	2391.1	2722.0	2791.4	50-54	16.68	50-54	278.1	357.0	398.8	454.0	465.6
Male	835.7	1069.8	1185.4	1359.6	1400.6	Male	11.86	Male	99.1	126.9	140.6	161.2	166.1
Female	831.7	1070.3	1205.7	1362.4	1390.8	Female	21.43	Female	178.2	229.4	258.4	292.0	298.0
55-59	1327.3	1651.4	2113.8	2362.2	2688.7	55-59	23.66	55-59	314.0	390.7	500.1	558.9	636.1
Male	659.5	820.1	1048.2	1162.6	1334.1	Male	16.85	Male	111.1	138.2	176.6	195.9	224.8
Female	667.8	831.3	1065.7	1199.6	1354.5	Female	30.17	Female	201.5	250.8	321.5	361.9	408.7
60-64	1209.4	1300.9	1615.3	2063.6	2308.2	60-64	28.68	60-64	346.9	373.1	463.3	591.8	662.0
Male	593.8	636.8	791.5	1011.0	1123.7	Male	20.53	Male	121.9	130.7	162.5	207.6	230.7
Female	615.6	664.0	823.7	1052.6	1184.5	Female	36.50	Female	224.7	242.4	300.7	384.2	432.3
65-69	1129.7	1154.0	1244.6	1544.5	1971.6	65-69	34.64	65-69	391.3	399.7	431.1	535.0	683.0
Male	535.9	554.2	597.0	742.8	949.4	Male	27.05	Male	145.0	149.9	161.5	200.9	256.8
Female	593.9	599.7	647.6	801.7	1022.2	Female	41.03	Female	243.7	246.1	265.7	328.9	419.4
70-74	980.4	1027.1	1054.0	1142.5	1420.6	70-74	38.16	70-74	374.1	391.9	402.2	436.0	542.1
Male	432.7	470.6	490.0	531.6	664.2	Male	30.32	Male	131.2	142.7	148.6	161.2	201.4
Female	547.7	556.6	564.1	610.8	756.4	Female	44.54	Female	243.9	247.9	251.3	272.1	336.9
75+	1547.8	1849.6	2100.6	2294.2	2502.1	75+	44.78	75+	693.1	828.3	940.6	1027.3	1120.4
Male	573.3	685.3	792.8	881.8	977.6	Male	33.69	Male	193.1	230.9	267.1	297.1	329.4
Female	974.6	1164.4	1307.8	1412.4	1524.3	Female	52.17	Female	508.4	607.5	682.3	736.8	795.2
TOTAL	23900.1	25746.0	27566.8	29318.8	30889.1	TOTAL	13.23	TOTAL	3202.8	3598.1	4028.5	4491.0	4980.1
Male	11730.3	12634.8	13535.0	14406.1	15185.2	Male	9.25	Male	1085.9	1222.6	1374.2	1540.1	1718.5
Female	12169.9	13111.2	14031.7	14912.6	15703.8	Female	17.07	Female	2121.0	2377.7	2653.8	2946.4	3250.6

NEWFOUNDLAND

Age Groups	Population Projections ('000s)					Age Groups	Weighted Age Specific Rates of Arthritis or Rheumatism (%)	Age Groups	Number of Arthritis or Rheumatism Cases ('000's)				
	1996	2001	2006	2011	2016				1996	2001	2006	2011	2016
15-19	44.9	40.8	35.9	33.5	29.4	15-19	0.62	15-19	0.3	0.3	0.2	0.2	0.2
Male	22.7	20.7	18.3	17.2	15.1	Male	0.56	Male	0.1	0.1	0.1	0.1	0.1
Female	22.2	20.1	17.6	16.3	14.4	Female	0.68	Female	0.2	0.1	0.1	0.1	0.1
20-24	47.5	38.7	34.8	30.5	28.1	20-24	1.32	20-24	0.6	0.5	0.5	0.4	0.4
Male	24.3	19.3	17.4	15.3	14.1	Male	0.93	Male	0.2	0.2	0.2	0.1	0.1
Female	23.2	19.4	17.4	15.2	13.9	Female	1.67	Female	0.4	0.3	0.3	0.3	0.2
25-29	47.0	42.8	35.1	31.8	28.2	25-29	1.93	25-29	0.9	0.8	0.7	0.6	0.5
Male	23.9	21.7	17.5	15.8	14.1	Male	1.71	Male	0.4	0.4	0.3	0.3	0.2
Female	23.1	21.0	17.6	15.9	14.1	Female	2.17	Female	0.5	0.5	0.4	0.3	0.3
30-34	48.0	44.8	40.4	33.7	30.9	30-34	1.68	30-34	0.8	0.8	0.7	0.6	0.5
Male	24.0	22.8	20.5	16.8	15.4	Male	2.32	Male	0.6	0.5	0.5	0.4	0.4
Female	24.0	22.1	19.9	16.9	15.4	Female	1.05	Female	0.3	0.2	0.2	0.2	0.2
35-39	48.4	47.3	43.4	39.0	33.0	35-39	9.49	35-39	4.6	4.5	4.1	3.7	3.1
Male	24.1	23.7	22.1	19.8	16.5	Male	8.19	Male	2.0	1.9	1.8	1.6	1.4
Female	24.3	23.6	21.4	19.2	16.4	Female	10.88	Female	2.6	2.6	2.3	2.1	1.8
40-44	46.9	47.9	46.5	42.3	38.0	40-44	10.25	40-44	4.8	4.9	4.8	4.3	3.9
Male	23.5	23.9	23.4	21.5	19.4	Male	7.32	Male	1.7	1.7	1.7	1.6	1.4
Female	23.5	24.0	23.1	20.7	18.6	Female	12.98	Female	3.1	3.1	3.0	2.7	2.4
45-49	42.9	46.1	47.0	45.5	41.2	45-49	14.18	45-49	6.1	6.5	6.7	6.5	5.8
Male	21.8	23.1	23.5	22.9	21.0	Male	12.82	Male	2.8	3.0	3.0	2.9	2.7
Female	21.1	23.0	23.5	22.6	20.2	Female	15.55	Female	3.3	3.6	3.7	3.5	3.1
50-54	32.4	41.9	44.9	45.8	44.3	50-54	19.44	50-54	6.3	8.1	8.7	8.9	8.6
Male	16.5	21.3	22.5	22.9	22.3	Male	19.01	Male	3.1	4.0	4.3	4.4	4.2
Female	16.0	20.7	22.5	22.9	22.0	Female	19.94	Female	3.2	4.1	4.5	4.6	4.4
55-59	24.4	31.5	40.6	43.4	44.3	55-59	31.93	55-59	7.8	10.1	13.0	13.9	14.1
Male	12.5	15.9	20.5	21.6	22.1	Male	26.03	Male	3.3	4.1	5.3	5.6	5.8
Female	11.9	15.6	20.1	21.7	22.1	Female	38.78	Female	4.6	6.0	7.8	8.4	8.6
60-64	21.0	23.4	30.1	38.7	41.3	60-64	23.87	60-64	5.0	5.6	7.2	9.2	9.9
Male	10.7	11.9	15.2	19.5	20.6	Male	28.10	Male	3.0	3.3	4.3	5.5	5.8
Female	10.3	11.5	15.0	19.2	20.8	Female	20.56	Female	2.1	2.4	3.1	3.9	4.3
65-69	19.0	19.7	21.9	28.1	36.0	65-69	38.89	65-69	7.4	7.7	8.5	10.9	14.0
Male	9.3	9.9	11.0	14.0	17.9	Male	41.79	Male	3.9	4.1	4.6	5.9	7.5
Female	9.7	9.9	10.9	14.1	18.1	Female	36.16	Female	3.5	3.6	3.9	5.1	6.5
70-74	15.8	16.8	17.5	19.5	25.0	70-74	35.40	70-74	5.6	5.9	6.2	6.9	8.9
Male	7.5	8.0	8.5	9.5	12.1	Male	36.42	Male	2.7	2.9	3.1	3.5	4.4
Female	8.3	8.9	9.0	10.0	12.9	Female	34.50	Female	2.9	3.1	3.1	3.5	4.5
75+	26.0	28.9	31.7	34.1	37.3	75+	44.71	75+	11.6	12.9	14.2	15.2	16.7
Male	10.3	11.3	12.4	13.6	15.3	Male	36.78	Male	3.8	4.2	4.6	5.0	5.6
Female	15.6	17.6	19.2	20.4	22.1	Female	50.25	Female	7.8	8.8	9.6	10.3	11.1
TOTAL	464.2	470.7	469.8	465.7	457.1	TOTAL	13.39	TOTAL	61.8	68.6	75.3	81.4	86.6
Male	230.9	233.6	232.7	230.4	226.0	Male	12.13	Male	27.6	30.6	33.7	36.8	39.6
Female	233.2	237.2	237.1	235.2	231.1	Female	14.63	Female	34.4	38.4	42.0	44.9	47.5

PRINCE EDWARD ISLAND

Age Groups	Population Projections ('000s)					Age Groups	Weighted Age Specific Rates of Arthritis or Rheumatism (%)	Age Groups	Number of Arthritis or Rheumatism Cases ('000's)				
	1996	2001	2006	2011	2016				1996	2001	2006	2011	2016
15-19	9.5	9.7	9.5	9.1	8.6	15-19	1.06	15-19	0.1	0.1	0.1	0.1	0.1
Male	4.9	5.0	4.8	4.7	4.4	Male	1.47	Male	0.1	0.1	0.1	0.1	0.1
Female	4.6	4.7	4.7	4.5	4.2	Female	0.59	Female	0.0	0.0	0.0	0.0	0.0
20-24	9.4	9.0	9.0	8.8	8.5	20-24	4.38	20-24	0.4	0.4	0.4	0.4	0.4
Male	4.9	4.6	4.6	4.4	4.3	Male	1.17	Male	0.1	0.1	0.1	0.1	0.1
Female	4.5	4.4	4.4	4.4	4.1	Female	7.08	Female	0.3	0.3	0.3	0.3	0.3
25-29	9.5	9.4	8.9	9.0	8.8	25-29	5.00	25-29	0.5	0.5	0.4	0.5	0.4
Male	4.8	4.8	4.6	4.6	4.4	Male	3.28	Male	0.2	0.2	0.2	0.2	0.1
Female	4.7	4.5	4.4	4.4	4.4	Female	6.59	Female	0.3	0.3	0.3	0.3	0.3
30-34	10.5	9.7	9.5	9.1	9.2	30-34	4.82	30-34	0.5	0.5	0.5	0.4	0.4
Male	5.3	4.9	4.9	4.6	4.7	Male	3.66	Male	0.2	0.2	0.2	0.2	0.2
Female	5.2	4.8	4.6	4.5	4.5	Female	5.92	Female	0.3	0.3	0.3	0.3	0.3
35-39	10.7	10.8	9.9	9.7	9.2	35-39	8.62	35-39	0.9	0.9	0.9	0.8	0.8
Male	5.3	5.4	5.0	4.9	4.7	Male	8.96	Male	0.5	0.5	0.4	0.4	0.4
Female	5.4	5.4	4.9	4.7	4.5	Female	8.31	Female	0.4	0.4	0.4	0.4	0.4
40-44	9.9	10.8	10.9	10.0	9.7	40-44	12.38	40-44	1.2	1.3	1.3	1.2	1.2
Male	4.9	5.3	5.5	5.0	5.0	Male	13.43	Male	0.7	0.7	0.7	0.7	0.7
Female	5.0	5.5	5.4	5.0	4.7	Female	11.14	Female	0.6	0.6	0.6	0.6	0.5
45-49	9.5	9.9	10.8	10.9	9.9	45-49	17.28	45-49	1.6	1.7	1.9	1.9	1.7
Male	4.7	4.9	5.3	5.5	5.0	Male	12.91	Male	0.6	0.6	0.7	0.7	0.6
Female	4.8	5.0	5.5	5.4	4.9	Female	21.85	Female	1.0	1.1	1.2	1.2	1.1
50-54	7.1	9.4	9.8	10.8	10.8	50-54	16.62	50-54	1.2	1.6	1.6	1.8	1.8
Male	3.6	4.7	4.8	5.3	5.4	Male	14.21	Male	0.5	0.7	0.7	0.8	0.8
Female	3.5	4.7	5.0	5.5	5.4	Female	18.96	Female	0.7	0.9	0.9	1.0	1.0
55-59	5.9	7.0	9.3	9.7	10.7	55-59	28.49	55-59	1.7	2.0	2.6	2.8	3.0
Male	2.9	3.5	4.6	4.7	5.2	Male	28.61	Male	0.8	1.0	1.3	1.3	1.5
Female	3.0	3.5	4.7	4.9	5.5	Female	28.37	Female	0.9	1.0	1.3	1.4	1.6
60-64	5.5	5.8	6.9	9.1	9.5	60-64	28.12	60-64	1.5	1.6	1.9	2.6	2.7
Male	2.7	2.8	3.4	4.4	4.6	Male	19.18	Male	0.5	0.5	0.7	0.8	0.9
Female	2.8	2.9	3.5	4.7	4.9	Female	37.43	Female	1.0	1.1	1.3	1.8	1.8
65-69	4.9	5.2	5.5	6.6	8.8	65-69	42.80	65-69	2.1	2.2	2.4	2.8	3.8
Male	2.4	2.5	2.6	3.2	4.2	Male	37.47	Male	0.9	0.9	1.0	1.2	1.6
Female	2.5	2.7	2.9	3.4	4.6	Female	47.04	Female	1.2	1.3	1.4	1.6	2.2
70-74	4.5	4.4	4.8	5.1	6.1	70-74	48.43	70-74	2.2	2.1	2.3	2.5	3.0
Male	2.1	2.1	2.2	2.3	2.8	Male	32.43	Male	0.7	0.7	0.7	0.7	0.9
Female	2.4	2.4	2.6	2.7	3.3	Female	65.85	Female	1.6	1.6	1.7	1.8	2.2
75+	8.4	9.0	9.4	10.1	10.8	75+	49.77	75+	4.2	4.5	4.7	5.0	5.4
Male	3.0	3.3	3.4	3.7	3.9	Male	40.71	Male	1.2	1.3	1.4	1.5	1.6
Female	5.3	5.9	6.2	6.5	6.9	Female	55.48	Female	2.9	3.3	3.4	3.6	3.8
TOTAL	105.3	110.1	114.3	118.0	120.5	TOTAL	16.79	TOTAL	18.1	19.4	21.0	22.8	24.7
Male	51.4	53.6	55.6	57.4	58.6	Male	13.45	Male	6.9	7.5	8.0	8.7	9.4
Female	53.8	56.4	58.7	60.5	61.9	Female	19.99	Female	11.3	12.2	13.2	14.2	15.4

NOVA SCOTIA

Age Groups	Population Projections ('000s)					Age Groups	Weighted Age Specific Rates of Arthritis or Rheumatism (%)	Age Groups	Number of Arthritis or Rheumatism Cases ('000's)				
	1996	2001	2006	2011	2016				1996	2001	2006	2011	2016
15-19	62.6	63.3	62.5	58.9	54.1	15-19	1.33	15-19	0.8	0.8	0.8	0.8	0.7
Male	31.8	32.5	31.9	30.2	27.7	Male	0.90	Male	0.3	0.3	0.3	0.3	0.2
Female	30.8	30.8	30.5	28.7	26.4	Female	1.80	Female	0.6	0.6	0.5	0.5	0.5
20-24	66.9	62.5	63.1	62.0	58.7	20-24	1.88	20-24	1.3	1.2	1.2	1.2	1.1
Male	34.6	31.9	32.5	31.8	30.2	Male	2.95	Male	1.0	0.9	1.0	0.9	0.9
Female	32.4	30.6	30.6	30.2	28.5	Female	0.79	Female	0.3	0.2	0.2	0.2	0.2
25-29	68.8	65.6	61.5	61.7	60.4	25-29	4.34	25-29	3.0	2.8	2.7	2.7	2.6
Male	35.0	33.9	31.5	31.8	31.0	Male	4.25	Male	1.5	1.4	1.3	1.4	1.3
Female	33.8	31.7	30.0	30.0	29.3	Female	4.40	Female	1.5	1.4	1.3	1.3	1.3
30-34	79.1	68.3	64.9	61.0	61.1	30-34	6.02	30-34	4.8	4.1	3.9	3.7	3.7
Male	39.8	34.8	33.5	31.2	31.4	Male	3.63	Male	1.4	1.3	1.2	1.1	1.1
Female	39.3	33.5	31.5	29.8	29.7	Female	8.73	Female	3.4	2.9	2.7	2.6	2.6
35-39	80.5	78.7	68.2	64.7	61.0	35-39	10.30	35-39	8.3	8.1	7.0	6.7	6.3
Male	40.2	39.6	34.7	33.2	31.2	Male	4.07	Male	1.6	1.6	1.4	1.4	1.3
Female	40.3	39.1	33.5	31.4	29.8	Female	16.29	Female	6.6	6.4	5.5	5.1	4.9
40-44	72.7	80.1	78.3	68.1	64.5	40-44	12.48	40-44	9.1	10.0	9.8	8.5	8.0
Male	35.8	40.0	39.4	34.5	33.1	Male	14.84	Male	5.3	5.9	5.8	5.1	4.9
Female	36.9	40.1	38.9	33.5	31.5	Female	10.36	Female	3.8	4.2	4.0	3.5	3.3
45-49	68.1	72.2	79.4	77.7	67.7	45-49	20.94	45-49	14.3	15.1	16.6	16.3	14.2
Male	34.0	35.4	39.5	39.0	34.3	Male	14.40	Male	4.9	5.1	5.7	5.6	4.9
Female	34.1	36.7	39.8	38.7	33.5	Female	26.42	Female	9.0	9.7	10.5	10.2	8.9
50-54	52.5	67.2	71.3	78.4	76.9	50-54	26.68	50-54	14.0	17.9	19.0	20.9	20.5
Male	26.3	33.4	34.9	38.9	38.5	Male	24.59	Male	6.5	8.2	8.6	9.6	9.5
Female	26.2	33.8	36.4	39.5	38.4	Female	29.73	Female	7.8	10.0	10.8	11.7	11.4
55-59	42.2	51.6	66.0	70.3	77.3	55-59	34.95	55-59	14.7	18.0	23.1	24.6	27.0
Male	20.9	25.6	32.6	34.2	38.2	Male	20.77	Male	4.3	5.3	6.8	7.1	7.9
Female	21.3	26.0	33.5	36.1	39.2	Female	46.92	Female	10.0	12.2	15.7	16.9	18.4
60-64	38.2	41.1	50.4	64.5	68.9	60-64	44.30	60-64	16.9	18.2	22.3	28.6	30.5
Male	18.8	20.1	24.7	31.5	33.2	Male	41.72	Male	7.8	8.4	10.3	13.1	13.9
Female	19.4	21.0	25.7	33.0	35.7	Female	46.72	Female	9.1	9.8	12.0	15.4	16.7
65-69	34.9	36.2	39.1	48.1	61.6	65-69	37.49	65-69	13.1	13.6	14.7	18.0	23.1
Male	16.3	17.4	18.7	23.1	29.5	Male	27.89	Male	4.5	4.9	5.2	6.4	8.2
Female	18.6	18.8	20.4	24.9	32.1	Female	47.22	Female	8.8	8.9	9.6	11.8	15.2
70-74	31.2	31.4	32.7	35.5	43.8	70-74	59.61	70-74	18.6	18.7	19.5	21.2	26.1
Male	13.8	14.2	15.2	16.5	20.4	Male	47.54	Male	6.6	6.8	7.2	7.8	9.7
Female	17.4	17.3	17.5	19.0	23.3	Female	67.64	Female	11.8	11.7	11.8	12.9	15.8
75+	56.1	61.8	65.8	69.6	74.8	75+	47.17	75+	26.5	29.2	31.0	32.8	35.3
Male	21.0	23.1	24.9	26.9	29.5	Male	30.83	Male	6.5	7.1	7.7	8.3	9.1
Female	35.0	38.6	40.9	42.7	45.1	Female	57.12	Female	20.0	22.0	23.4	24.4	25.8
TOTAL	753.8	780.0	803.4	820.6	830.6	TOTAL	19.40	TOTAL	145.3	157.8	171.6	185.8	199.2
Male	368.3	382.0	394.1	403.0	408.1	Male	14.53	Male	52.3	57.2	62.5	68.2	73.0
Female	385.4	397.9	409.2	417.6	422.5	Female	23.98	Female	92.5	100.0	108.2	116.6	124.7

NEW BRUNSWICK

Age Groups	Population Projections ('000s)					Age Groups	Weighted Age Specific Rates of Arthritis or Rheumatism (%)	Age Groups	Number of Arthritis or Rheumatism Cases ('000's)				
	1996	2001	2006	2011	2016				1996	2001	2006	2011	2016
15-19	52.9	51.0	48.3	45.7	41.9	15-19	0.00	15-19	0.0	0.0	0.0	0.0	0.0
Male	27.0	25.6	24.5	23.2	21.2	Male	0.00	Male	0.0	0.0	0.0	0.0	0.0
Female	25.9	25.4	23.8	22.5	20.7	Female	0.00	Female	0.0	0.0	0.0	0.0	0.0
20-24	56.1	50.0	48.1	45.7	43.3	20-24	1.17	20-24	0.7	0.6	0.6	0.5	0.5
Male	28.6	25.3	24.0	22.9	21.8	Male	1.41	Male	0.4	0.4	0.3	0.3	0.3
Female	27.4	24.7	24.1	22.7	21.6	Female	0.95	Female	0.3	0.2	0.2	0.2	0.2
25-29	55.9	53.9	48.5	46.9	45.0	25-29	1.63	25-29	0.9	0.9	0.8	0.8	0.7
Male	28.5	27.5	24.5	23.5	22.7	Male	0.82	Male	0.2	0.2	0.2	0.2	0.2
Female	27.5	26.4	24.0	23.4	22.3	Female	2.73	Female	0.8	0.7	0.7	0.6	0.6
30-34	63.9	55.6	53.1	48.4	47.3	30-34	5.29	30-34	3.4	2.9	2.8	2.6	2.5
Male	32.1	28.3	27.1	24.5	23.8	Male	3.70	Male	1.2	1.0	1.0	0.9	0.9
Female	31.7	27.4	26.0	23.9	23.5	Female	6.74	Female	2.1	1.8	1.8	1.6	1.6
35-39	64.7	63.9	55.6	52.9	48.8	35-39	4.19	35-39	2.7	2.7	2.3	2.2	2.0
Male	32.4	32.1	28.1	26.9	24.7	Male	0.72	Male	0.2	0.2	0.2	0.2	0.2
Female	32.3	31.8	27.4	26.0	24.1	Female	7.47	Female	2.4	2.4	2.0	1.9	1.8
40-44	60.9	64.6	63.7	55.4	52.7	40-44	13.71	40-44	8.3	8.9	8.7	7.6	7.2
Male	30.2	32.3	31.9	28.0	26.7	Male	4.98	Male	1.5	1.6	1.6	1.4	1.3
Female	30.7	32.4	31.8	27.4	26.0	Female	21.30	Female	6.5	6.9	6.8	5.8	5.5
45-49	56.6	60.3	64.0	63.0	54.9	45-49	12.57	45-49	7.1	7.6	8.0	7.9	6.9
Male	28.6	29.8	31.9	31.5	27.7	Male	8.58	Male	2.5	2.6	2.7	2.7	2.4
Female	28.0	30.5	32.2	31.6	27.3	Female	16.52	Female	4.6	5.0	5.3	5.2	4.5
50-54	41.9	55.6	59.3	63.0	62.1	50-54	28.47	50-54	11.9	15.8	16.9	17.9	17.7
Male	21.3	28.0	29.2	31.3	30.9	Male	23.21	Male	4.9	6.5	6.8	7.3	7.2
Female	20.7	27.7	30.1	31.8	31.2	Female	33.96	Female	7.0	9.4	10.2	10.8	10.6
55-59	33.4	41.1	54.3	58.0	61.8	55-59	28.51	55-59	9.5	11.7	15.5	16.5	17.6
Male	16.8	20.7	27.1	28.4	30.5	Male	19.05	Male	3.2	3.9	5.2	5.4	5.8
Female	16.6	20.4	27.2	29.6	31.3	Female	38.91	Female	6.5	7.9	10.6	11.5	12.2
60-64	29.9	32.4	39.9	52.7	56.3	60-64	35.43	60-64	10.6	11.5	14.1	18.7	19.9
Male	14.5	16.1	19.8	26.0	27.3	Male	23.27	Male	3.4	3.7	4.6	6.1	6.4
Female	15.3	16.3	20.1	26.7	29.1	Female	45.90	Female	7.0	7.5	9.2	12.3	13.4
65-69	27.7	28.3	30.7	37.9	49.9	65-69	34.90	65-69	9.7	9.9	10.7	13.2	17.4
Male	13.0	13.5	14.9	18.5	24.2	Male	30.93	Male	4.0	4.2	4.6	5.7	7.5
Female	14.7	14.8	15.8	19.4	25.7	Female	38.28	Female	5.6	5.7	6.0	7.4	9.8
70-74	25.4	25.0	25.5	27.9	34.5	70-74	38.24	70-74	9.7	9.6	9.8	10.7	13.2
Male	11.3	11.3	11.8	13.1	16.3	Male	36.35	Male	4.1	4.1	4.3	4.8	5.9
Female	14.0	13.7	13.8	14.7	18.1	Female	40.22	Female	5.6	5.5	5.6	5.9	7.3
75+	43.0	48.4	51.8	54.5	58.4	75+	52.05	75+	22.4	25.2	27.0	28.4	30.4
Male	16.1	18.1	19.4	20.7	22.9	Male	38.16	Male	6.1	6.9	7.4	7.9	8.7
Female	26.8	30.4	32.3	33.7	35.5	Female	59.66	Female	16.0	18.1	19.3	20.1	21.2
TOTAL	612.3	630.0	643.0	651.8	657.0	TOTAL	15.57	TOTAL	96.9	107.2	117.2	127.0	136.2
Male	300.4	308.4	314.2	318.3	320.6	Male	10.49	Male	31.8	35.4	38.9	42.8	46.7
Female	311.9	321.8	328.7	333.4	336.3	Female	20.46	Female	64.5	71.3	77.7	83.5	88.7

QUEBEC

Age Groups	Population Projections ('000s)					Age Groups	Weighted Age Specific Rates of Arthritis or Rheumatism (%)	Age Groups	Number of Arthritis or Rheumatism Cases ('000's)				
	1996	2001	2006	2011	2016				1996	2001	2006	2011	2016
15-19	503.2	488.4	502.6	515.3	483.0	15-19	0.72	15-19	3.6	3.5	3.6	3.7	3.5
Male	258.1	250.2	258.2	265.8	249.5	Male	0.20	Male	0.5	0.5	0.5	0.5	0.5
Female	245.0	238.3	244.4	249.5	233.5	Female	1.24	Female	3.0	3.0	3.0	3.1	2.9
20-24	478.4	519.3	506.3	520.6	532.9	20-24	2.86	20-24	13.7	14.9	14.5	14.9	15.2
Male	243.8	266.6	259.6	267.7	275.1	Male	0.31	Male	0.8	0.8	0.8	0.8	0.9
Female	234.6	252.7	246.7	252.9	257.8	Female	5.70	Female	13.4	14.4	14.1	14.4	14.7
25-29	523.9	504.1	542.5	531.9	546.4	25-29	1.36	25-29	7.1	6.9	7.4	7.2	7.4
Male	267.4	257.8	279.1	273.5	281.7	Male	0.10	Male	0.3	0.3	0.3	0.3	0.3
Female	256.5	246.4	263.3	258.4	264.7	Female	2.70	Female	6.9	6.7	7.1	7.0	7.1
30-34	646.1	548.4	529.1	565.5	557.2	30-34	2.74	30-34	17.7	15.0	14.5	15.5	15.3
Male	329.6	280.5	271.2	291.5	287.1	Male	1.61	Male	5.3	4.5	4.4	4.7	4.6
Female	316.5	267.9	257.9	274.0	270.1	Female	3.96	Female	12.5	10.6	10.2	10.9	10.7
35-39	673.8	660.0	565.5	546.7	581.9	35-39	2.77	35-39	18.7	18.3	15.7	15.1	16.1
Male	339.2	336.4	289.0	280.1	299.7	Male	2.34	Male	7.9	7.9	6.8	6.6	7.0
Female	334.6	323.5	276.4	266.6	282.2	Female	3.20	Female	10.7	10.4	8.8	8.5	9.0
40-44	607.5	677.9	665.2	573.8	555.9	40-44	5.06	40-44	30.7	34.3	33.7	29.0	28.1
Male	303.8	340.3	338.1	292.4	283.9	Male	3.17	Male	9.6	10.8	10.7	9.3	9.0
Female	303.7	337.6	327.2	281.4	272.0	Female	6.84	Female	20.8	23.1	22.4	19.2	18.6
45-49	551.6	606.1	675.5	664.0	575.5	45-49	8.03	45-49	44.3	48.7	54.2	53.3	46.2
Male	275.8	302.1	338.1	336.4	292.4	Male	6.59	Male	18.2	19.9	22.3	22.2	19.3
Female	275.8	304.0	337.4	327.6	283.1	Female	9.67	Female	26.7	29.4	32.6	31.7	27.4
50-54	455.9	545.4	599.1	667.6	657.6	50-54	10.60	50-54	48.3	57.8	63.5	70.8	69.7
Male	226.3	271.4	297.4	332.8	331.9	Male	7.60	Male	17.2	20.6	22.6	25.3	25.2
Female	229.6	273.9	301.7	334.8	325.6	Female	13.43	Female	30.8	36.8	40.5	45.0	43.7
55-59	350.0	445.7	533.0	586.0	653.5	55-59	18.48	55-59	64.7	82.4	98.5	108.3	120.8
Male	172.1	219.4	263.3	288.8	323.7	Male	14.76	Male	25.4	32.4	38.9	42.6	47.8
Female	178.0	226.2	269.7	297.2	329.8	Female	21.87	Female	38.9	49.5	59.0	65.0	72.1
60-64	315.7	336.3	427.7	512.0	563.9	60-64	22.35	60-64	70.6	75.2	95.6	114.4	126.0
Male	151.6	163.0	207.9	249.9	274.8	Male	16.02	Male	24.3	26.1	33.3	40.0	44.0
Female	164.1	173.3	219.8	262.1	289.1	Female	27.70	Female	45.5	48.0	60.9	72.6	80.1
65-69	290.8	294.2	314.5	400.0	479.7	65-69	31.03	65-69	90.2	91.3	97.6	124.1	148.9
Male	133.4	137.8	148.9	190.3	229.4	Male	21.52	Male	28.7	29.7	32.0	41.0	49.4
Female	157.4	156.4	165.6	209.7	250.3	Female	37.65	Female	59.3	58.9	62.3	79.0	94.2
70-74	242.4	258.8	262.9	282.5	360.3	70-74	28.36	70-74	68.7	73.4	74.6	80.1	102.2
Male	103.8	113.7	118.2	128.8	165.4	Male	24.61	Male	25.5	28.0	29.1	31.7	40.7
Female	138.6	145.1	144.7	153.7	194.9	Female	31.07	Female	43.1	45.1	45.0	47.8	60.6
75+	364.0	439.3	505.1	553.0	601.7	75+	37.28	75+	135.7	163.8	188.3	206.2	224.3
Male	125.8	152.1	177.6	198.3	220.5	Male	30.92	Male	38.9	47.0	54.9	61.3	68.2
Female	238.3	287.3	327.4	354.8	381.2	Female	41.95	Female	100.0	120.5	137.3	148.8	159.9
TOTAL	6003.3	6323.8	6628.9	6918.9	7149.5	TOTAL	10.07	TOTAL	614.1	685.3	761.6	842.7	923.7
Male	2930.7	3091.5	3246.7	3396.1	3515.3	Male	6.90	Male	202.6	228.5	256.5	286.2	316.8
Female	3072.6	3232.4	3382.2	3522.8	3634.3	Female	13.12	Female	411.5	456.2	503.3	552.9	601.1

ONTARIO

Age Groups	Population Projections ('000s)					Age Groups	Weighted Age Specific Rates of Arthritis or Rheumatism (%)	Age Groups	Number of Arthritis or Rheumatism Cases ('000's)				
	1996	2001	2006	2011	2016				1996	2001	2006	2011	2016
15-19	723.4	810.3	878.9	917.0	911.8	15-19	0.96	15-19	6.9	7.8	8.4	8.8	8.8
Male	371.3	415.6	452.5	472.9	470.2	Male	0.61	Male	2.3	2.5	2.8	2.9	2.9
Female	352.1	394.7	426.4	444.2	441.5	Female	1.32	Female	4.6	5.2	5.6	5.9	5.8
20-24	766.9	798.4	886.1	954.1	992.0	20-24	1.99	20-24	15.3	15.9	17.6	19.0	19.7
Male	389.9	406.9	451.6	488.0	508.3	Male	1.30	Male	5.1	5.3	5.9	6.3	6.6
Female	377.0	391.5	434.5	466.1	483.7	Female	2.68	Female	10.1	10.5	11.6	12.5	13.0
25-29	868.7	856.3	892.5	979.0	1044.9	25-29	2.67	25-29	23.2	22.9	23.8	26.1	27.9
Male	435.0	431.3	450.6	494.5	529.8	Male	2.01	Male	8.7	8.7	9.1	9.9	10.6
Female	433.6	425.0	441.9	484.4	515.1	Female	3.32	Female	14.4	14.1	14.7	16.1	17.1
30-34	1019.9	952.8	945.8	984.0	1067.7	30-34	4.22	30-34	43.0	40.2	39.9	41.5	45.1
Male	515.3	476.1	475.0	495.3	537.9	Male	2.88	Male	14.8	13.7	13.7	14.3	15.5
Female	504.6	476.6	470.8	488.7	529.8	Female	5.54	Female	28.0	26.4	26.1	27.1	29.4
35-39	998.6	1081.4	1018.0	1013.6	1052.1	35-39	5.79	35-39	57.8	62.6	58.9	58.7	60.9
Male	502.6	545.2	508.5	508.7	529.1	Male	4.38	Male	22.0	23.9	22.3	22.3	23.2
Female	495.9	536.1	509.5	504.9	523.0	Female	7.19	Female	35.7	38.5	36.6	36.3	37.6
40-44	873.5	1035.9	1118.2	1056.7	1053.4	40-44	8.44	40-44	73.7	87.4	94.4	89.2	88.9
Male	431.5	520.8	563.2	527.8	528.6	Male	6.47	Male	27.9	33.7	36.4	34.1	34.2
Female	442.0	515.1	555.0	528.9	524.9	Female	10.39	Female	45.9	53.5	57.7	55.0	54.5
45-49	801.8	891.3	1052.5	1133.7	1073.6	45-49	12.19	45-49	97.7	108.6	128.3	138.2	130.9
Male	399.9	440.3	528.7	570.5	536.2	Male	9.35	Male	37.4	41.2	49.4	53.3	50.1
Female	402.0	451.0	523.9	563.2	537.4	Female	14.97	Female	60.2	67.5	78.4	84.3	80.4
50-54	617.1	804.2	894.9	1054.5	1134.5	50-54	17.92	50-54	110.6	144.1	160.4	189.0	203.3
Male	308.3	399.5	440.7	527.9	569.3	Male	12.49	Male	38.5	49.9	55.0	65.9	71.1
Female	308.8	404.6	454.1	526.6	565.2	Female	23.30	Female	72.0	94.3	105.8	122.7	131.7
55-59	501.4	615.9	800.2	891.4	1048.7	55-59	24.78	55-59	124.2	152.6	198.3	220.9	259.9
Male	248.4	304.4	393.9	435.5	521.0	Male	17.81	Male	44.2	54.2	70.2	77.6	92.8
Female	253.0	311.6	406.3	456.0	527.7	Female	31.44	Female	79.5	98.0	127.7	143.4	165.9
60-64	460.4	495.8	608.4	788.0	879.0	60-64	30.09	60-64	138.5	149.2	183.1	237.1	264.5
Male	225.3	241.5	296.2	382.8	424.3	Male	22.75	Male	51.3	54.9	67.4	87.1	96.5
Female	235.1	254.3	312.3	405.2	454.7	Female	37.32	Female	87.7	94.9	116.6	151.2	169.7
65-69	433.6	443.3	479.2	588.0	759.8	65-69	36.46	65-69	158.1	161.6	174.7	214.4	277.0
Male	206.2	212.3	228.8	281.0	362.9	Male	28.05	Male	57.8	59.6	64.2	78.8	101.8
Female	227.4	231.1	250.4	307.0	396.8	Female	44.01	Female	100.1	101.7	110.2	135.1	174.6
70-74	379.6	396.8	408.3	443.8	545.9	70-74	41.47	70-74	157.4	164.6	169.3	184.0	226.4
Male	166.8	182.6	189.6	206.0	254.2	Male	31.94	Male	53.3	58.3	60.6	65.8	81.2
Female	212.7	214.2	218.7	237.8	291.7	Female	49.01	Female	104.2	105.0	107.2	116.5	143.0
75+	573.9	699.3	804.1	886.0	972.4	75+	49.07	75+	281.6	343.1	394.6	434.8	477.2
Male	212.5	260.9	307.5	344.8	383.9	Male	36.61	Male	77.8	95.5	112.6	126.2	140.5
Female	361.4	438.3	496.6	541.2	588.3	Female	57.07	Female	206.3	250.1	283.4	308.9	335.7
TOTAL	9018.8	9881.7	10786.9	11689.9	12535.9	TOTAL	14.06	TOTAL	1288.2	1460.7	1651.8	1861.7	2090.4
Male	4413.0	4837.5	5286.6	5735.6	6155.7	Male	10.00	Male	441.2	501.4	569.4	644.6	727.1
Female	4605.6	5044.2	5500.4	5954.2	6380.1	Female	17.94	Female	848.7	959.8	1081.6	1214.9	1358.5

MANITOBA

Age Groups	Population Projections ('000s)					Age Groups	Weighted Age Specific Rates of Arthritis or Rheumatism (%)	Age Groups	Number of Arthritis or Rheumatism Cases ('000's)				
	1996	2001	2006	2011	2016				1996	2001	2006	2011	2016
15-19	77.1	80.6	81.8	80.4	76.0	15-19	1.16	15-19	0.9	0.9	0.9	0.9	0.9
Male	39.5	41.4	42.0	41.4	39.2	Male	0.80	Male	0.3	0.3	0.3	0.3	0.3
Female	37.6	39.2	39.7	38.9	36.8	Female	1.56	Female	0.6	0.6	0.6	0.6	0.6
20-24	80.1	77.3	81.1	82.2	80.9	20-24	3.21	20-24	2.6	2.5	2.6	2.6	2.6
Male	41.3	39.6	41.6	42.2	41.6	Male	2.79	Male	1.2	1.1	1.2	1.2	1.2
Female	38.8	37.7	39.5	40.0	39.3	Female	3.62	Female	1.4	1.4	1.4	1.4	1.4
25-29	80.6	79.8	78.2	81.9	82.9	25-29	3.67	25-29	3.0	2.9	2.9	3.0	3.0
Male	41.1	40.9	39.9	41.8	42.4	Male	3.37	Male	1.4	1.4	1.3	1.4	1.4
Female	39.5	38.9	38.3	40.1	40.5	Female	4.00	Female	1.6	1.6	1.5	1.6	1.6
30-34	91.6	80.9	80.2	79.1	82.7	30-34	4.51	30-34	4.1	3.6	3.6	3.6	3.7
Male	46.5	41.1	41.0	40.3	42.2	Male	1.69	Male	0.8	0.7	0.7	0.7	0.7
Female	45.1	39.7	39.2	38.8	40.5	Female	7.54	Female	3.4	3.0	3.0	2.9	3.1
35-39	92.9	91.3	81.3	80.6	79.8	35-39	7.46	35-39	6.9	6.8	6.1	6.0	6.0
Male	47.3	46.3	41.3	41.1	40.6	Male	6.52	Male	3.1	3.0	2.7	2.7	2.6
Female	45.6	45.0	40.0	39.5	39.2	Female	8.39	Female	3.8	3.8	3.4	3.3	3.3
40-44	84.0	91.6	90.4	80.9	80.1	40-44	11.16	40-44	9.4	10.2	10.1	9.0	8.9
Male	42.0	46.5	45.8	41.0	40.8	Male	8.20	Male	3.4	3.8	3.8	3.4	3.3
Female	42.0	45.1	44.6	39.9	39.3	Female	13.88	Female	5.8	6.3	6.2	5.5	5.5
45-49	75.4	82.3	90.0	89.0	79.8	45-49	11.51	45-49	8.7	9.5	10.4	10.2	9.2
Male	37.9	41.0	45.5	44.9	40.4	Male	8.70	Male	3.3	3.6	4.0	3.9	3.5
Female	37.6	41.3	44.4	44.0	39.5	Female	14.34	Female	5.4	5.9	6.4	6.3	5.7
50-54	58.5	73.6	80.5	88.1	87.3	50-54	18.49	50-54	10.8	13.6	14.9	16.3	16.1
Male	29.2	36.7	39.9	44.3	43.8	Male	13.68	Male	4.0	5.0	5.5	6.1	6.0
Female	29.3	36.9	40.6	43.8	43.4	Female	23.07	Female	6.8	8.5	9.4	10.1	10.0
55-59	47.7	56.9	71.7	78.6	86.1	55-59	28.19	55-59	13.4	16.0	20.2	22.2	24.3
Male	23.6	28.1	35.4	38.5	42.9	Male	20.15	Male	4.8	5.7	7.1	7.8	8.6
Female	24.2	28.8	36.3	40.0	43.2	Female	35.27	Female	8.5	10.2	12.8	14.1	15.2
60-64	44.4	46.0	54.9	69.1	75.9	60-64	33.97	60-64	15.1	15.6	18.6	23.5	25.8
Male	21.8	22.3	26.7	33.6	36.7	Male	24.26	Male	5.3	5.4	6.5	8.2	8.9
Female	22.5	23.6	28.2	35.5	39.2	Female	45.26	Female	10.2	10.7	12.8	16.1	17.7
65-69	42.4	41.6	43.3	51.8	65.2	65-69	36.73	65-69	15.6	15.3	15.9	19.0	23.9
Male	20.0	20.0	20.6	24.7	31.2	Male	33.17	Male	6.6	6.6	6.8	8.2	10.3
Female	22.3	21.6	22.7	27.1	34.1	Female	39.89	Female	8.9	8.6	9.1	10.8	13.6
70-74	40.3	38.0	37.5	39.3	47.2	70-74	42.33	70-74	17.1	16.1	15.9	16.6	20.0
Male	17.7	17.4	17.5	18.2	21.9	Male	38.40	Male	6.8	6.7	6.7	7.0	8.4
Female	22.5	20.6	20.0	21.1	25.3	Female	45.18	Female	10.2	9.3	9.0	9.5	11.4
75+	71.8	79.5	83.2	85.3	88.5	75+	47.92	75+	34.4	38.1	39.9	40.9	42.4
Male	27.3	30.5	32.4	33.8	35.6	Male	35.16	Male	9.6	10.7	11.4	11.9	12.5
Female	44.5	49.1	50.9	51.6	52.9	Female	56.42	Female	25.1	27.7	28.7	29.1	29.8
TOTAL	886.8	919.4	954.2	986.3	1012.4	TOTAL	16.07	TOTAL	141.9	151.2	161.9	173.9	186.9
Male	435.4	451.9	469.6	486.1	499.3	Male	11.79	Male	50.5	54.0	58.0	62.6	67.9
Female	451.5	467.4	484.5	500.1	513.2	Female	20.19	Female	91.7	97.5	104.2	111.5	118.9

SASKATCHEWAN

Age Groups	Population Projections ('000s)					Age Groups	Weighted Age Specific Rates of Arthritis or Rheumatism (%)	Age Groups	Number of Arthritis or Rheumatism Cases ('000's)				
	1996	2001	2006	2011	2016				1996	2001	2006	2011	2016
15-19	75.3	76.9	72.7	67.4	63.0	15-19	0.17	15-19	0.1	0.1	0.1	0.1	0.1
Male	38.9	39.4	37.3	34.8	32.6	Male	0.00	Male	0.0	0.0	0.0	0.0	0.0
Female	36.4	37.5	35.4	32.6	30.4	Female	0.37	Female	0.1	0.1	0.1	0.1	0.1
20-24	67.6	69.4	71.4	68.2	63.9	20-24	1.23	20-24	0.8	0.9	0.9	0.8	0.8
Male	34.4	36.1	36.8	35.2	33.2	Male	0.00	Male	0.0	0.0	0.0	0.0	0.0
Female	33.1	33.3	34.6	33.0	30.7	Female	2.61	Female	0.9	0.9	0.9	0.9	0.8
25-29	62.5	63.5	65.3	67.6	65.3	25-29	2.93	25-29	1.8	1.9	1.9	2.0	1.9
Male	31.6	32.5	33.9	34.9	33.7	Male	3.92	Male	1.2	1.3	1.3	1.4	1.3
Female	30.8	31.0	31.4	32.7	31.5	Female	2.05	Female	0.6	0.6	0.6	0.7	0.6
30-34	74.7	61.4	62.1	63.7	66.1	30-34	7.36	30-34	5.5	4.5	4.6	4.7	4.9
Male	37.6	31.1	31.8	33.0	34.1	Male	5.73	Male	2.2	1.8	1.8	1.9	2.0
Female	37.1	30.2	30.3	30.7	32.0	Female	9.01	Female	3.3	2.7	2.7	2.8	2.9
35-39	79.9	73.5	61.4	61.9	63.4	35-39	5.40	35-39	4.3	4.0	3.3	3.3	3.4
Male	40.5	37.0	31.1	31.6	32.7	Male	6.19	Male	2.5	2.3	1.9	2.0	2.0
Female	39.4	36.4	30.3	30.3	30.6	Female	4.54	Female	1.8	1.7	1.4	1.4	1.4
40-44	74.3	78.4	72.7	61.5	61.7	40-44	12.98	40-44	9.6	10.2	9.4	8.0	8.0
Male	37.8	39.6	36.6	31.1	31.4	Male	9.33	Male	3.5	3.7	3.4	2.9	2.9
Female	36.5	38.8	36.1	30.4	30.3	Female	16.60	Female	6.1	6.4	6.0	5.0	5.0
45-49	62.5	72.8	77.1	72.0	61.3	45-49	10.29	45-49	6.4	7.5	7.9	7.4	6.3
Male	31.8	36.9	38.9	36.2	30.9	Male	12.02	Male	3.8	4.4	4.7	4.4	3.7
Female	30.7	35.9	38.3	35.9	30.4	Female	8.53	Female	2.6	3.1	3.3	3.1	2.6
50-54	48.2	61.3	71.3	75.9	71.2	50-54	24.85	50-54	12.0	15.2	17.7	18.9	17.7
Male	24.2	31.0	35.9	38.0	35.6	Male	15.34	Male	3.7	4.8	5.5	5.8	5.5
Female	24.1	30.3	35.4	37.8	35.6	Female	34.62	Female	8.3	10.5	12.3	13.1	12.3
55-59	41.4	47.0	59.8	69.6	74.3	55-59	24.63	55-59	10.2	11.6	14.7	17.1	18.3
Male	20.5	23.4	30.0	34.8	37.0	Male	17.63	Male	3.6	4.1	5.3	6.1	6.5
Female	20.9	23.6	29.8	34.8	37.3	Female	32.67	Female	6.8	7.7	9.7	11.4	12.2
60-64	40.1	39.6	45.2	57.6	67.0	60-64	27.92	60-64	11.2	11.1	12.6	16.1	18.7
Male	19.8	19.4	22.2	28.6	33.1	Male	18.02	Male	3.6	3.5	4.0	5.2	6.0
Female	20.3	20.2	23.0	29.0	33.8	Female	36.74	Female	7.5	7.4	8.5	10.7	12.4
65-69	39.8	37.3	37.1	42.6	54.3	65-69	39.90	65-69	15.9	14.9	14.8	17.0	21.7
Male	19.1	18.1	17.8	20.6	26.5	Male	33.86	Male	6.5	6.1	6.0	7.0	9.0
Female	20.7	19.2	19.3	22.0	27.8	Female	44.62	Female	9.2	8.6	8.6	9.8	12.4
70-74	36.9	35.7	33.7	33.8	39.0	70-74	45.24	70-74	16.7	16.2	15.2	15.3	17.6
Male	17.0	16.6	15.8	15.8	18.4	Male	25.04	Male	4.3	4.2	4.0	4.0	4.6
Female	19.9	19.1	17.9	18.0	20.7	Female	69.32	Female	13.8	13.2	12.4	12.5	14.3
75+	71.6	78.1	81.7	82.3	82.9	75+	60.73	75+	43.5	47.4	49.6	50.0	50.3
Male	28.0	29.9	31.2	31.6	32.0	Male	44.96	Male	12.6	13.4	14.0	14.2	14.4
Female	43.5	48.2	50.5	50.7	50.9	Female	70.99	Female	30.9	34.2	35.8	36.0	36.1
TOTAL	774.8	794.8	811.6	824.1	833.6	TOTAL	17.60	TOTAL	138.1	145.3	152.9	160.7	169.8
Male	381.3	390.9	399.4	406.2	411.5	Male	12.30	Male	47.5	49.6	52.0	54.7	57.9
Female	393.4	403.8	412.2	417.9	422.0	Female	22.82	Female	92.0	97.2	102.4	107.3	113.3

ALBERTA

Age Groups	Population Projections ('000s)					Age Groups	Weighted Age Specific Rates of Arthritis or Rheumatism (%)	Age Groups	Number of Arthritis or Rheumatism Cases ('000's)				
	1996	2001	2006	2011	2016				1996	2001	2006	2011	2016
15-19	197.0	218.0	221.9	221.4	216.2	15-19	1.24	15-19	2.4	2.7	2.8	2.7	2.7
Male	101.1	111.7	113.1	112.0	109.6	Male	0.69	Male	0.7	0.8	0.8	0.8	0.8
Female	95.9	106.2	108.9	109.4	106.6	Female	1.82	Female	1.7	1.9	2.0	2.0	1.9
20-24	197.7	210.6	231.8	236.6	236.5	20-24	2.52	20-24	5.0	5.3	5.8	6.0	6.0
Male	100.5	107.5	118.2	120.1	119.5	Male	1.53	Male	1.5	1.6	1.8	1.8	1.8
Female	97.2	103.1	113.6	116.5	117.0	Female	3.52	Female	3.4	3.6	4.0	4.1	4.1
25-29	212.1	209.5	222.2	242.5	247.5	25-29	3.91	25-29	8.3	8.2	8.7	9.5	9.7
Male	107.2	106.0	112.9	123.1	125.3	Male	3.11	Male	3.3	3.3	3.5	3.8	3.9
Female	104.9	103.5	109.3	119.4	122.2	Female	4.75	Female	5.0	4.9	5.2	5.7	5.8
30-34	248.1	221.9	220.5	232.3	251.4	30-34	4.73	30-34	11.7	10.5	10.4	11.0	11.9
Male	125.9	111.6	111.0	117.5	127.1	Male	3.54	Male	4.5	4.0	3.9	4.2	4.5
Female	122.2	110.3	109.4	114.8	124.3	Female	5.91	Female	7.2	6.5	6.5	6.8	7.3
35-39	263.7	254.5	230.2	229.2	240.3	35-39	5.62	35-39	14.8	14.3	12.9	12.9	13.5
Male	133.9	128.2	115.1	114.8	120.8	Male	4.61	Male	6.2	5.9	5.3	5.3	5.6
Female	129.8	126.3	115.1	114.4	119.5	Female	6.64	Female	8.6	8.4	7.6	7.6	7.9
40-44	231.3	264.4	257.5	234.4	233.4	40-44	9.25	40-44	21.4	24.5	23.8	21.7	21.6
Male	118.1	133.4	129.1	116.7	116.4	Male	7.90	Male	9.3	10.5	10.2	9.2	9.2
Female	113.2	131.0	128.4	117.6	117.0	Female	10.69	Female	12.1	14.0	13.7	12.6	12.5
45-49	189.8	229.8	262.5	257.0	234.8	45-49	13.42	45-49	25.5	30.8	35.2	34.5	31.5
Male	97.1	116.7	132.0	128.5	116.7	Male	9.48	Male	9.2	11.1	12.5	12.2	11.1
Female	92.7	113.1	130.5	128.5	118.1	Female	17.56	Female	16.3	19.9	22.9	22.6	20.7
50-54	138.6	187.6	226.4	258.4	253.9	50-54	15.53	50-54	21.5	29.1	35.2	40.1	39.4
Male	70.6	95.5	114.6	129.6	126.7	Male	9.51	Male	6.7	9.1	10.9	12.3	12.0
Female	68.0	92.0	111.8	128.8	127.2	Female	21.40	Female	14.6	19.7	23.9	27.6	27.2
55-59	108.7	136.0	183.4	220.6	251.6	55-59	25.24	55-59	27.4	34.3	46.3	55.7	63.5
Male	54.8	68.5	92.5	110.6	125.2	Male	17.68	Male	9.7	12.1	16.4	19.6	22.1
Female	53.9	67.5	90.9	110.0	126.4	Female	32.90	Female	17.7	22.2	29.9	36.2	41.6
60-64	96.9	106.2	132.6	178.0	213.4	60-64	30.41	60-64	29.5	32.3	40.3	54.1	64.9
Male	48.5	52.4	65.5	88.2	105.2	Male	22.25	Male	10.8	11.7	14.6	19.6	23.4
Female	48.4	53.8	67.1	89.9	108.2	Female	39.42	Female	19.1	21.2	26.5	35.4	42.7
65-69	86.7	93.1	102.2	127.5	170.5	65-69	36.75	65-69	31.9	34.2	37.6	46.9	62.7
Male	42.4	45.4	49.3	61.6	82.7	Male	29.71	Male	12.6	13.5	14.6	18.3	24.6
Female	44.3	47.7	53.0	65.9	87.8	Female	43.56	Female	19.3	20.8	23.1	28.7	38.2
70-74	71.8	79.9	86.0	94.8	118.3	70-74	41.89	70-74	30.1	33.5	36.0	39.7	49.6
Male	32.7	37.9	40.8	44.5	55.8	Male	33.49	Male	11.0	12.7	13.7	14.9	18.7
Female	39.1	42.0	45.2	50.3	62.5	Female	48.91	Female	19.1	20.5	22.1	24.6	30.6
75+	115.4	139.6	163.4	185.3	207.8	75+	49.51	75+	57.1	69.1	80.9	91.7	102.9
Male	44.7	53.8	64.6	74.4	84.2	Male	41.65	Male	18.6	22.4	26.9	31.0	35.1
Female	70.7	85.7	98.8	110.9	123.6	Female	54.84	Female	38.8	47.0	54.2	60.8	67.8
TOTAL	2157.8	2351.0	2540.7	2717.8	2875.8	TOTAL	13.14	TOTAL	286.6	328.9	376.0	426.5	479.7
Male	1077.4	1168.7	1258.6	1341.6	1415.3	Male	9.67	Male	104.1	118.6	135.1	153.0	172.7
Female	1080.4	1182.2	1282.2	1376.3	1460.5	Female	16.62	Female	182.9	210.7	241.6	274.6	308.4

BRITISH COLUMBIA

Age Groups	Population Projections ('000s)					Age Groups	Weighted Age Specific Rates of Arthritis or Rheumatism (%)	Age Groups	Number of Arthritis or Rheumatism Cases ('000's)				
	1996	2001	2006	2011	2016				1996	2001	2006	2011	2016
15-19	242.5	276.5	289.7	300.9	301.3	15-19	1.92	15-19	4.7	5.3	5.6	5.8	5.8
Male	124.4	141.3	148.2	154.6	155.1	Male	2.40	Male	3.0	3.4	3.6	3.7	3.7
Female	118.2	135.1	141.5	146.3	146.2	Female	1.39	Female	1.6	1.9	2.0	2.0	2.0
20-24	248.6	271.3	301.4	313.1	323.2	20-24	1.34	20-24	3.3	3.6	4.0	4.2	4.3
Male	125.4	138.0	153.1	159.2	165.0	Male	0.00	Male	0.0	0.0	0.0	0.0	0.0
Female	123.2	133.3	148.3	153.9	158.2	Female	2.66	Female	3.3	3.5	3.9	4.1	4.2
25-29	279.6	284.4	302.3	330.6	342.1	25-29	2.63	25-29	7.4	7.5	8.0	8.7	9.0
Male	140.4	142.5	152.6	166.8	172.8	Male	1.65	Male	2.3	2.4	2.5	2.8	2.9
Female	139.2	141.9	149.7	163.8	169.2	Female	3.61	Female	5.0	5.1	5.4	5.9	6.1
30-34	323.4	313.5	313.9	329.9	357.7	30-34	3.66	30-34	11.8	11.5	11.5	12.1	13.1
Male	162.9	157.1	157.1	166.2	180.2	Male	2.64	Male	4.3	4.1	4.1	4.4	4.8
Female	160.4	156.4	156.8	163.7	177.5	Female	4.73	Female	7.6	7.4	7.4	7.7	8.4
35-39	334.9	352.1	336.9	336.1	351.6	35-39	6.93	35-39	23.2	24.4	23.3	23.3	24.4
Male	167.2	177.0	168.5	167.9	176.8	Male	2.69	Male	4.5	4.8	4.5	4.5	4.8
Female	167.7	175.2	168.5	168.2	174.9	Female	11.09	Female	18.6	19.4	18.7	18.7	19.4
40-44	308.8	355.5	369.7	352.7	351.7	40-44	7.66	40-44	23.7	27.2	28.3	27.0	26.9
Male	153.6	177.0	185.2	175.7	175.2	Male	3.04	Male	4.7	5.4	5.6	5.3	5.3
Female	155.2	178.5	184.5	176.9	176.5	Female	12.03	Female	18.7	21.5	22.2	21.3	21.2
45-49	281.7	321.1	366.3	379.5	362.0	45-49	11.55	45-49	32.5	37.1	42.3	43.8	41.8
Male	142.4	159.6	182.2	189.8	180.2	Male	7.70	Male	11.0	12.3	14.0	14.6	13.9
Female	139.3	161.5	184.1	189.7	181.8	Female	15.72	Female	21.9	25.4	28.9	29.8	28.6
50-54	210.7	287.5	326.0	370.7	383.7	50-54	19.72	50-54	41.6	56.7	64.3	73.1	75.7
Male	107.1	144.9	161.6	184.0	191.5	Male	12.34	Male	13.2	17.9	19.9	22.7	23.6
Female	103.7	142.6	164.4	186.7	192.2	Female	26.85	Female	27.9	38.3	44.1	50.1	51.6
55-59	169.3	214.5	289.5	327.7	372.2	55-59	23.26	55-59	39.4	49.9	67.3	76.2	86.6
Male	85.5	108.3	145.2	161.9	184.2	Male	13.51	Male	11.6	14.6	19.6	21.9	24.9
Female	83.8	106.2	144.3	165.8	188.0	Female	32.55	Female	27.3	34.6	47.0	54.0	61.2
60-64	155.3	171.6	215.4	288.5	326.7	60-64	30.53	60-64	47.4	52.4	65.8	88.1	99.7
Male	78.9	85.9	108.0	143.9	160.8	Male	13.36	Male	10.5	11.5	14.4	19.2	21.5
Female	76.4	85.7	107.4	144.6	165.9	Female	49.09	Female	37.5	42.1	52.7	71.0	81.4
65-69	148.4	153.0	168.5	210.6	280.9	65-69	31.23	65-69	46.3	47.8	52.6	65.8	87.7
Male	72.8	76.3	83.1	104.2	138.4	Male	24.86	Male	18.1	19.0	20.7	25.9	34.4
Female	75.5	76.6	85.4	106.4	142.5	Female	36.80	Female	27.8	28.2	31.4	39.2	52.4
70-74	131.5	138.8	143.2	158.0	197.5	70-74	35.04	70-74	46.1	48.6	50.2	55.4	69.2
Male	59.4	66.0	69.4	75.8	95.3	Male	26.93	Male	16.0	17.8	18.7	20.4	25.7
Female	72.1	72.7	73.8	82.2	102.2	Female	43.22	Female	31.2	31.4	31.9	35.5	44.2
75+	216.7	263.6	301.8	330.8	363.1	75+	35.26	75+	76.4	92.9	106.4	116.6	128.0
Male	83.9	101.2	118.2	132.6	147.9	Male	22.20	Male	18.6	22.5	26.2	29.4	32.8
Female	132.7	162.4	183.5	198.2	215.1	Female	43.90	Female	58.3	71.3	80.6	87.0	94.4
TOTAL	3051.3	3403.3	3724.5	4029.2	4313.8	TOTAL	12.97	TOTAL	403.7	465.0	529.6	600.1	672.3
Male	1503.8	1675.1	1832.4	1982.8	2123.6	Male	7.74	Male	117.8	135.5	154.0	174.9	198.2
Female	1547.4	1728.0	1892.2	2046.3	2190.3	Female	18.07	Female	286.5	330.1	376.3	426.3	475.2